

Chapter 1

The State Population

Introduction

This chapter covers statewide population trends for Alaska. It contains information on the components of population change as well as discussion of statewide age, sex, race and ethnicity, and household composition. Data provided for decennial census years have an April 1 reference date, and data for all other years have a July 1 reference date.

2019 Population and Density

Alaska had 731,007 residents on July 1, 2019, or 0.2 percent of the U.S. population. The 2019 resident population of the United States, excluding territories and military overseas, was 328,239,523.

Alaska was the third-least populous state in 2019. The states with fewer people were Wyoming with 578,759 and Vermont with 623,989. The District of Columbia also had fewer people than Alaska, at 705,749.

Alaska has 570,641 square miles of land, or 16 percent of the U.S., and its water area is 94,743 square miles. Alaska had 1.3 people per square mile in 2019, in contrast to 93 per square mile for the U.S. as a whole. Excluding Anchorage, which

contains 40 percent of the state's population but only 0.3 percent of the land, Alaska averaged 0.8 people per square mile in 2019.

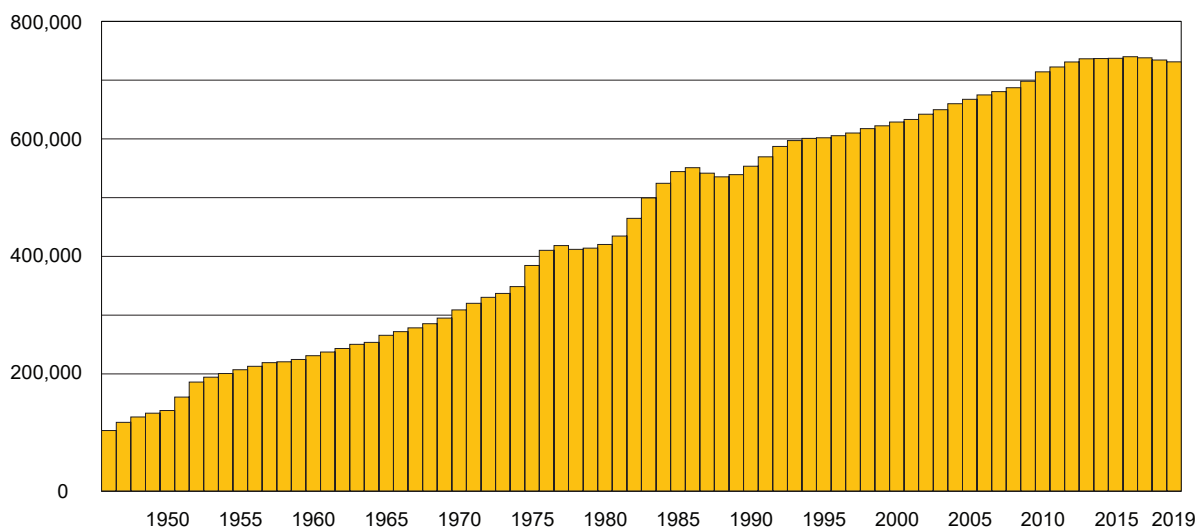
The majority of Alaskans live in towns, villages, and clustered settlements. Most of the state's land area is owned by the federal government, the state government, or Alaska Native corporations. Excluding these areas, most of which have settlement exclusions or restrictions, about 1 percent of the state's land is under other private ownership. Most of Alaska has moderately dense settlements surrounded by large tracts of uninhabited land.

Alaska Population History

Alaska's population was small before the gold rush in the 1890s, although early territorial censuses were incomplete. The first census in 1880 counted 33,426 people. By 1900, the gold rush had nearly doubled the state's population, to 63,592.

After the turn of the century, the population of Alaska remained roughly the same for 40 years. By 1939, it was 59,278. The state's gold production had declined, and much of the state remained inaccessible.

Figure 1.1
Alaska Total Population, 1946 to 2019



Source: Alaska Department of Labor and Workforce Development, Research and Analysis Section

Table 1.1**Annual Components of Population Change for Alaska, 1970 to 2019**

July 1 to June 30	End of Period Population	Population Change	Average Rate of Change	Births	Birth Rate	Deaths	Death Rate	Natural Increase	Net Migration
1970-71	319,600	11,100	3.53	7,437	2.37	1,444	0.46	5,993	5,107
1971-72	329,800	10,200	3.14	7,129	2.20	1,462	0.45	5,667	4,533
1972-73	336,400	6,600	1.98	6,781	2.04	1,468	0.44	5,313	1,287
1973-74	348,100	11,700	3.42	6,847	2.00	1,467	0.43	5,380	6,320
1974-75	384,100	36,000	9.83	7,275	1.99	1,497	0.41	5,778	30,222
1975-76	409,800	25,700	6.47	7,694	1.94	1,570	0.40	6,124	19,576
1976-77	418,000	8,200	1.98	8,175	1.98	1,612	0.39	6,563	1,637
1977-78	411,600	-6,400	-1.54	8,668	2.09	1,654	0.40	7,014	-13,414
1978-79	413,700	2,100	0.51	9,043	2.19	1,654	0.40	7,389	-5,289
1979-80	419,800	6,100	1.46	9,400	2.26	1,671	0.40	7,729	-1,629
1980-81	434,300	14,500	3.40	9,912	2.32	1,738	0.41	8,174	6,326
1981-82	464,300	30,000	6.68	10,783	2.40	1,775	0.40	9,008	20,992
1982-83	499,100	34,800	7.22	11,728	2.43	1,862	0.39	9,866	24,934
1983-84	524,000	24,900	4.87	12,319	2.41	1,945	0.38	10,374	14,526
1984-85	543,900	19,900	3.73	12,727	2.38	2,033	0.38	10,694	9,206
1985-86	550,700	6,800	1.24	12,556	2.29	2,110	0.39	10,446	-3,646
1986-87	541,300	-9,400	-1.72	11,941	2.19	2,096	0.38	9,845	-19,245
1987-88	535,000	-6,300	-1.17	11,483	2.13	2,073	0.39	9,410	-15,710
1988-89	538,900	3,900	0.73	11,468	2.14	2,088	0.39	9,380	-5,480
1989-90	553,171	14,271	2.61	11,776	2.16	2,142	0.39	9,634	4,637
1990-91	569,054	15,883	2.83	11,798	2.10	2,225	0.40	9,573	6,310
1991-92	586,722	17,668	3.06	11,744	2.03	2,214	0.38	9,530	8,138
1992-93	596,906	10,184	1.72	11,347	1.92	2,477	0.42	8,870	1,314
1993-94	600,622	3,716	0.62	10,978	1.83	2,422	0.40	8,556	-4,840
1994-95	601,581	959	0.16	10,439	1.74	2,500	0.42	7,939	-6,980
1995-96	605,212	3,631	0.60	10,079	1.67	2,707	0.45	7,372	-3,741
1996-97	609,655	4,443	0.73	10,018	1.65	2,574	0.42	7,444	-3,001
1997-98	617,082	7,427	1.21	9,924	1.62	2,642	0.43	7,282	145
1998-99	622,000	4,918	0.79	9,864	1.59	2,609	0.42	7,255	-2,337
1999-00	628,346	6,346	1.02	10,102	1.62	2,829	0.45	7,273	-927
2000-01	632,716	4,370	0.69	9,980	1.58	2,934	0.47	7,046	-2,676
2001-02	641,729	9,013	1.41	9,892	1.55	3,075	0.48	6,817	2,196
2002-03	649,466	7,737	1.20	10,025	1.55	3,107	0.48	6,918	819
2003-04	659,653	10,187	1.56	10,299	1.57	3,060	0.47	7,239	2,948
2004-05	667,146	7,493	1.13	10,368	1.56	3,167	0.48	7,201	292
2005-06	674,583	7,437	1.11	10,656	1.59	3,163	0.47	7,493	-56
2006-07	680,169	5,586	0.82	11,065	1.63	3,456	0.51	7,609	-2,023
2007-08	686,818	6,649	0.97	11,283	1.65	3,523	0.52	7,760	-1,111
2008-09	697,828	11,010	1.59	11,504	1.66	3,503	0.51	8,001	3,009
2009-10	713,913	16,085	2.28	11,218	1.59	3,631	0.51	7,587	8,498
2010-11	722,262	8,349	1.16	11,694	1.63	3,844	0.54	7,850	499
2011-12	730,649	8,387	1.15	11,100	1.53	3,853	0.53	7,247	1,140
2012-13	736,077	5,428	0.74	11,312	1.54	3,980	0.54	7,332	-1,904
2013-14	736,416	339	0.05	11,432	1.55	3,968	0.54	7,464	-7,125
2014-15	736,989	573	0.08	11,323	1.54	4,294	0.58	7,029	-6,456
2015-16	739,649	2,660	0.36	11,272	1.53	4,451	0.60	6,821	-4,161
2016-17	737,783	-1,866	-0.25	10,751	1.46	4,425	0.60	6,326	-8,192
2017-18	734,055	-3,728	-0.51	10,367	1.41	4,413	0.60	5,954	-9,682
2018-19	731,007	-3,048	-0.42	9,885	1.35	4,625	0.63	5,260	-8,308

Source: Alaska Department of Labor and Workforce Development, Research and Analysis Section

World War II brought the construction of the ALCAN (Alaska-Canadian) Highway, which resulted in dramatic population growth. The war and ALCAN construction played a key role in the development of Anchorage and Fairbanks in particular.

Alaska's population grew rapidly from the end of World War II in 1945 through the Korean War years of 1950 through 1953. The state gained more than 25,000 people from 1951 to 1952 alone. After that, the population grew at a slower pace until the military buildups for the Vietnam War in the 1960s. At statehood in 1959, Alaska had approximately 224,000 people.

Construction of the 800-mile Trans-Alaska Oil Pipeline dramatically boosted population growth in the 1970s. The pipeline linked the North Slope oilfield of Prudhoe Bay with shipping facilities at Valdez. Pipeline construction peaked in 1975, and the state netted 30,000 movers over a 12-month period. When the pipeline was complete, the state lost population as people moved away. Still, the state gained 48,000 people through migration over the decade.

With new revenue from oil production, Alaska had an economic boom in the early 1980s. The population increased nearly 30 percent, making Alaska the fastest-growing state over that period. It grew most from 1982 to 1983, gaining nearly 25,000 people from net migration alone.

By 1986, falling oil prices triggered a recession. From 1986 to 1987, the state lost more than 19,000 people through net migration and lost 9,400 people overall. The cumulative net out-migration loss from 1986 to 1989 was about 40,000 people. The state had a high number of births during those years, but the population still dropped more than 2 percent

from its 1986 level. By the end of the decade, net migration numbers became positive again.

Alaska's population increased more than 36 percent from 1970 to 1980 and nearly 32 percent from 1980 to 1990. For comparison, the U.S. as a whole grew by slightly more than 10 percent from 1970 to 1980 and another 10 percent from 1980 to 1990.

The 1990s began with three years of economic recovery and net migration gains that were followed by a period of net migration losses due in part to military base closures. Birth rates also declined in the 1990s as baby boomers (people born between 1946 and 1964) aged past childbearing years. The state's population increased 14 percent for the decade, slightly more than for nation as a whole.

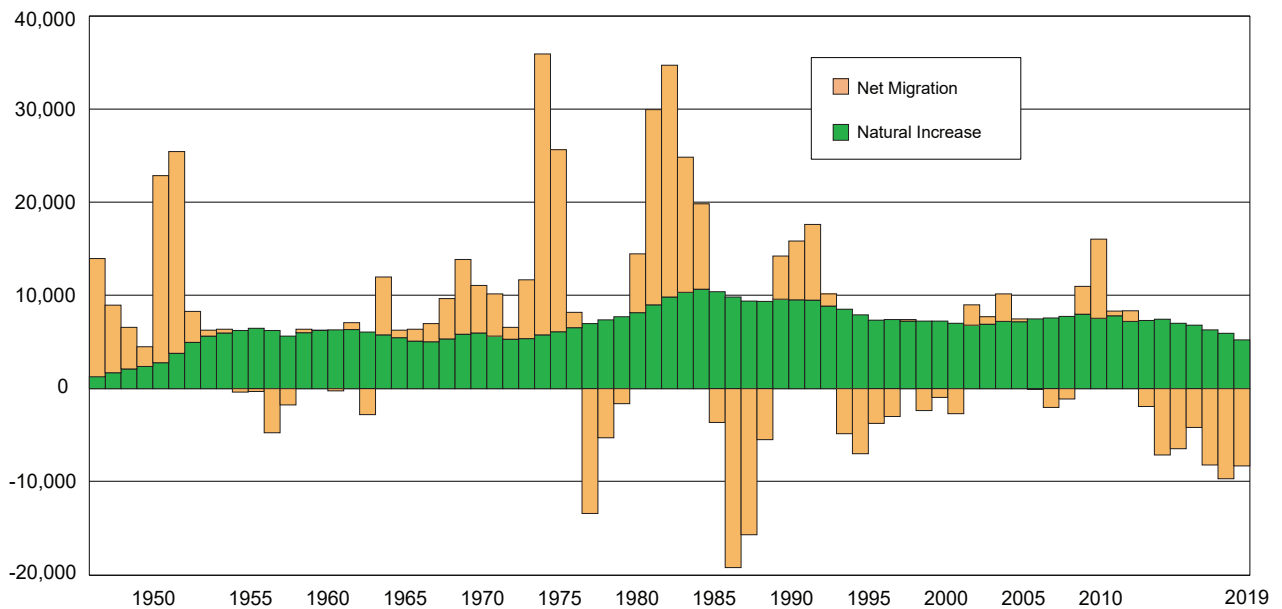
Alaska then grew steadily from 2000 to 2010, and although high population turnover continued due to migration, the gains and losses were fairly balanced through 2009. From 2009 to 2010, the state's net migration gain approached 8,500 people, the most for a single year since the 1980s. This big gain was likely related to the late-2000s recession, which affected the nation far more severely than it did Alaska.

Growth slowed in 2013 due to net migration losses, and the state lost population from 2016 to 2019 for the first time since the late 1980s.

Components of Change

Population change is made up of natural increase (births minus deaths) and migration, as shown in Table 1.1. Natural

Figure 1.2
Components of Population Change for Alaska, 1947 to 2019



Source: Alaska Department of Labor and Workforce Development, Research and Analysis Section

increase is a stable component of population change because birth and death trends don't change quickly. Migration is a volatile component of population change in the state, sometimes shifting dramatically from one year to the next.

Births and Deaths

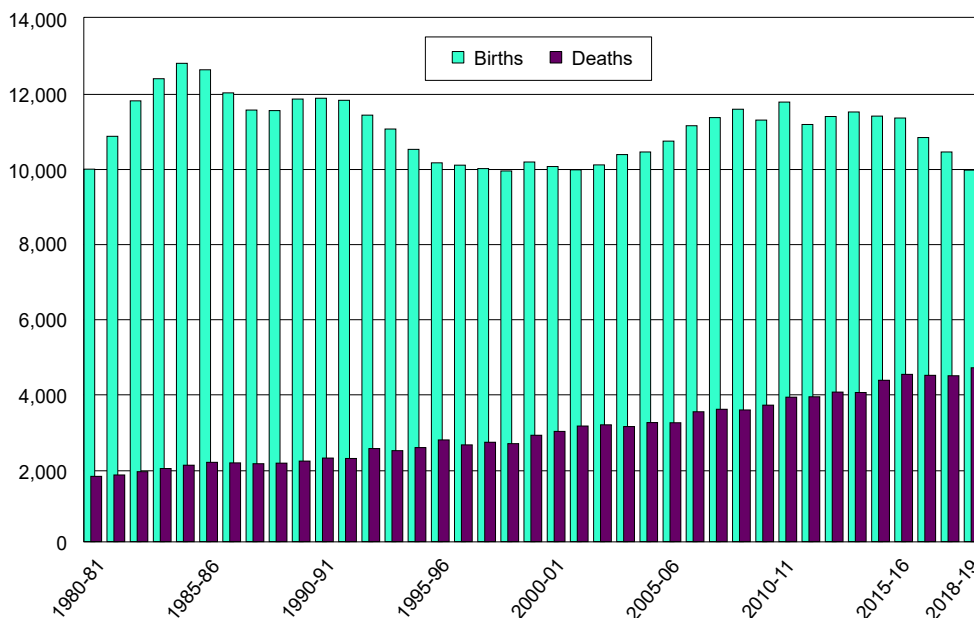
Births and deaths are an important part of population change for Alaska and are closely tied to the state's age structure as well as age-specific fertility and mortality rates. Table 1.1 shows annual trends in the crude birth rate (number of births divided by the total population) and crude death rate in Alaska.

Newborns have accounted for between 1 and 2 percent of the yearly population since the early 1990s, when the large baby boomer population aged past child-bearing years. Between 10,000 and 12,000 babies have been born each year in Alaska since the mid-2000s, but the number fell slightly below 10,000 for 2018 to 2019.

Alaska's crude death rate has increased steadily over time as the state's population has aged, from a low of 0.38 percent of the population in the mid-1980s to 0.63 percent in 2019. Alaska now has more than 4,000 deaths each year, up from around 2,000 per year in the mid-1980s.

As Figure 1.3 shows, Alaska's ratio of births to deaths has shifted substantially over time. From 1980 to 1981, 5.7 Alaskans were born for every person who died during the

Figure 1.3
Births and Deaths in Alaska, 1980 to 2019



Note: Annual birth and death data are reported from July 1 through June 30.

Source: Alaska Department of Labor and Workforce Development, Research and Analysis Section

same period. Ten years ago, from 2008 to 2009, the births-to-deaths ratio was 3.3, and from 2018 to 2019 the ratio was 2.1.

Birth rates can also be analyzed with a measure called the "total fertility rate," which is the total number of children that would be born to a woman if she lived her entire life with that year's age-specific fertility rates, or the number of births per woman by age. A total fertility rate of around 2.1 is necessary for a population to replace itself through births alone. Based on data from the National Center for Health Statistics, the total fertility rate for the U.S. was between 1.7 and 2.0 from the early 1970s to the late 1980s. In 1990, the national total fertility rate reached 2.1 children per woman and remained between 1.7 and 2.1 through 2019.

Alaska's total fertility rate has consistently topped the national rate. Based on Alaska birth records and annual population estimates, Alaska's rate from the early 1970s through the late 1980s was between 2.0 and 2.5. In 1990, Alaska's total fertility rate reached more than 2.6, then fluctuated between 2.2 and 2.6 through 2010. Alaska's TFR remained around 2.2 through 2015 but has since declined to 2.0.

"Life expectancy at birth" for a given year is the number of years a person would live if that person lived an entire life with that year's age-specific mortality rates. According to the National Center for Health Statistics, the national life expectancy at birth increased steadily from 73.7 in 1980 to 78.7 in 2018. Based on Alaska death records and annual population estimates, Alaska's statewide life expectancy increased from 72.1 in 1980 to 78.3 in 2018.

Migration

As shown in Figure 1.2 and Table 1.2, net migration can vary widely from year to year. Tens of thousands of people move both to and from the state each year, and relatively small fluctuations in the number moving in or out can yield a large net gain or loss.

In recent years, fluctuations in net migration for Alaska have often been attributed to economic trends and events, but troop movements are significant as well. Much of the migration to and from Alaska depends on the stationing of military personnel, which is tied to historical events and planning at the federal level.

The majority of people living in Alaska are migrants to the state — statistics from the U.S. Census Bureau's 2014-2018 American Community Survey show 59 percent

of Alaskans were born outside the state. Regionally, these proportions varied from more than 75 percent in Denali Borough, Aleutians West Census Area, and Skagway Municipality to a low of 5 percent in the Kusilvak Census Area. Forty-two percent of Alaskans residing in places other than the state's five most populous boroughs were born outside Alaska versus 67 percent in Fairbanks North Star Borough, 63 percent in Anchorage and Kenai Peninsula Borough, and roughly 60 percent in Matanuska-Susitna Borough and City and Borough of Juneau.

The 2019 ACS indicates 8 percent of Alaskans were foreign-born, up from 6 percent during the 2000 Census. For the U.S., 14 percent were foreign-born in 2019, up from 11 percent in 2000.

At the state and national levels, data to track annual migration are available from the Internal Revenue Service's Tax Statistics, and these show Alaska has among the highest rates of gross migration (in-migration plus out-migration) in the nation. Only the District of Columbia's 18 percent gross migration rate was higher than Alaska's 12 percent for 2010 to 2018. The states with the next-highest rates were Wyoming (11 percent), Hawaii (10), and North Dakota (10).

The states that exchange the most people with Alaska typically have large populations or are close geographically. From 2010 to 2018, Washington sent and received the highest number of movers to and from Alaska, followed by Texas and California.

Race and Ethnicity Categories

Race and ethnicity categories used by the U.S. Census Bureau have changed over the decades, and this affects the comparability of data from different years. Major race groupings in 2010 Census data are White, Black or African American, American Indian or Alaska Native, Asian, and Native Hawaiian or Other Pacific Islander. Individuals may write in their race under "some other race," and those responses are then assigned one of the major race categories. Tables noted "modified race data" in this publication include the adjustment for some other race, and those without that note do not have the adjustment. There is also an ethnic categorization, which is separate from race, where people can report Hispanic origin.

Because the American Indian population in Alaska is quite small relative to the Alaska Native population, the term "Alaska Native" is used in this publication to refer to "American Indian or Alaska Native." "Native Hawaiian or Other Pacific Islander" is sometimes shortened to "Hawaiian or Pacific Islander" or just "Pacific Islander."

The 2000 Census brought a fundamental change to race and ethnicity data collection by giving respondents the option to report more than one race. As a result, race data from the 2000 and 2010 censuses are not directly comparable to race data from previous censuses.

Table 1.2
Migration to and from Alaska, 1980 to 2019

July 1 to June 30	Net Migration	In Migration	Out Migration	Gross Migration
1980-81	6,326	47,210	40,884	88,094
1981-82	20,992	60,035	39,043	99,078
1982-83	24,934	64,682	39,748	104,430
1983-84	14,526	57,992	43,466	101,458
1984-85	9,206	54,986	45,780	100,766
1985-86	-3,646	53,451	57,097	110,548
1986-87	-19,245	38,085	57,330	95,415
1987-88	-15,710	34,393	50,103	84,496
1988-89	-5,480	41,185	46,665	87,850
1989-90	4,637	42,777	38,140	80,917
1990-91	6,310	44,890	38,580	83,470
1991-92	8,138	51,432	43,294	94,726
1992-93	1,314	47,171	45,857	93,028
1993-94	-4,840	42,329	47,169	89,498
1994-95	-6,980	38,999	45,979	84,978
1995-96	-3,741	40,282	44,023	84,305
1996-97	-3,001	41,476	44,477	85,953
1997-98	145	40,974	40,829	81,803
1998-99	-2,337	39,885	42,222	82,107
1999-00	-927	39,149	40,076	79,225
2000-01	-2,676	35,226	37,902	73,128
2001-02	2,196	38,746	36,550	75,296
2002-03	819	38,564	37,745	76,309
2003-04	2,948	40,877	37,929	78,806
2004-05	292	38,288	37,996	76,284
2005-06	-56	40,068	40,124	80,192
2006-07	-2,023	38,237	40,260	78,497
2007-08	-1,111	40,518	41,629	82,147
2008-09	3,009	43,147	40,138	83,285
2009-10	8,498	45,371	36,873	82,244
2010-11	499	40,746	40,247	80,993
2011-12	1,140	47,421	46,281	93,702
2012-13	-1,904	50,586	52,490	103,076
2013-14	-7,125	41,494	48,619	90,113
2014-15	-6,456	39,678	46,134	85,812
2015-16	-4,161	41,436	45,597	87,033
2016-17	-8,192	40,056	48,248	88,304
2017-18	-9,682	36,509	46,191	82,700
2018-19	-8,308	34,677	42,985	77,662

Source: Alaska Department of Labor and Workforce Development, Research and Analysis Section

Because data in the pre-2000 categories are still in demand by some data users, Research and Analysis and the National Center for Health Statistics provide bridged-race estimates, which assign all individuals to a single race group.

Historical Alaska Native Population

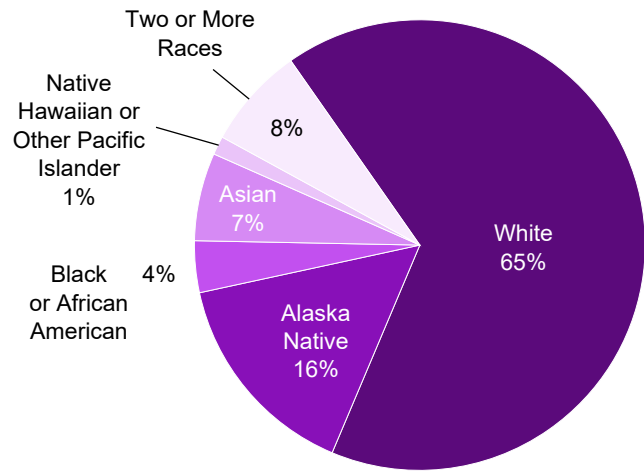
Few reliable data are available on the overall size of the Alaska Native population before the 1929 territorial census. In 1929, 29,983 Alaska Natives made up 51 percent of Alaska’s population. Although the Alaska Native population has grown rapidly since 1929, the non-Native population has grown more rapidly. (See Table 1.3.)

Current Race and Ethnic Composition

The Alaska Native or American Indian (alone) population in Alaska was 113,714 in 2019, or 16 percent of the state’s total, a bigger proportion than any other state. For comparison, New Mexico’s population was 11 percent American Indian (alone) and Hawaii’s was 10 percent Native Hawaiian or other Pacific Islander (alone), according to the U.S. Census Bureau’s 2019 Population Estimates program.

Alaska’s White (alone) population was 477,041, or 65 percent

Figure 1.4
Proportion of Alaska Residents by Race (Alone), 2019



Note: Percentages do not sum to 100 due to rounding.

Source: Alaska Department of Labor and Workforce Development, Research and Analysis Section

Table 1.3
Alaska Native or American Indian and Total Population, Alaska, 1910 to 2019

Year	Alaska Native or American Indian Alone		Alaska Native or American Indian*		Alaska Native or American Indian Alone or in Comb.		Total Population
		Percent		Percent		Percent	
1910	-	-	25,331	39.4	-	-	64,356
1920	-	-	26,558	48.3	-	-	55,036
1929	-	-	29,983	50.6	-	-	59,278
1939	-	-	32,458	44.8	-	-	72,524
1950	-	-	33,863	26.3	-	-	128,643
1960	-	-	42,522	18.8	-	-	226,167
1970	-	-	50,605	16.7	-	-	302,583
1980	-	-	64,103	16.0	-	-	401,851
1990	-	-	85,698	15.6	-	-	550,043
2000	98,743	15.8	107,929	17.2	119,499	19.1	626,932
2010	106,287	15.0	120,382	16.9	139,782	19.7	710,231
2011	108,125	15.0	122,468	17.0	142,183	19.7	722,262
2012	109,223	14.9	123,617	16.9	143,422	19.6	730,649
2013	110,664	15.0	124,963	17.0	144,833	19.7	736,077
2014	111,715	15.2	126,082	17.1	145,942	19.8	736,416
2015	112,814	15.3	127,124	17.2	146,969	19.9	736,989
2016	113,453	15.3	127,799	17.3	147,668	20.0	739,649
2017	113,667	15.4	128,010	17.4	147,852	20.0	737,783
2018	113,735	15.5	128,006	17.4	147,897	20.1	734,055
2019	113,714	15.6	128,046	17.5	148,042	20.3	731,007

Note: Modified race data.

*Estimates for 2000 and 2010 through 2019 are bridged-race estimates.

Sources: Alaska Department of Labor and Workforce Development, Research and Analysis Section; and U.S. Census Bureau

of the state. (See Figure 1.4 and Table 1.4.) Alaska had 52,842 Hispanic residents in 2019, which was 7 percent of the state total. People of Hispanic origin can be of any race.

Population by Age

The size of different age groups is affected by aging as well as births, deaths, and migration. Alaska's age structure as of 2019 is shown in Table 1.15 and figures 1.5 and 1.6. Second to aging, the largest influence on Alaska's age structure is migration, which is particularly high for 18-to-35-year-olds and their children younger than school age.

While Alaska's total population increased 3 percent from the 2010 Census to July 2019, children under the age of 5 decreased 8 percent, from 53,996 to 49,686. The number of young children reached a low of 47,270 in 2001 before rising steadily for 10 years, then declining again. Although births are the primary driver of the number in this age group, migration also has an effect on it.

The population aged 5 to 13 are of elementary and middle school age. This group grew 4 percent from 2010 to 2019, from 91,587 to 95,117, and made up 13 percent of the state population in 2019.

The number of youths aged 14 to 17 has declined 6 percent since 2010, from 41,795 to 39,343 in 2019. This age group reached its peak size in 2005 at 46,332. Five percent of the state's population was in this age group in 2019. In general, teenagers are less subject to changes in migration flows than younger age groups.

Overall, the number of people 0 to 19 years old has remained remarkably steady since the mid-90s, hovering slightly above 200,000. (See Figure 1.6.)

The 18-to-24 age group — which has very high rates of migration for school and work — has decreased 14 percent since 2010, from 74,881 to 64,067 in 2019. People in this age group made up 9 percent of the state's population in 2019. In general, migration yields a net loss of people at ages 18 and 19, followed by a net gain for ages 20 to 24.

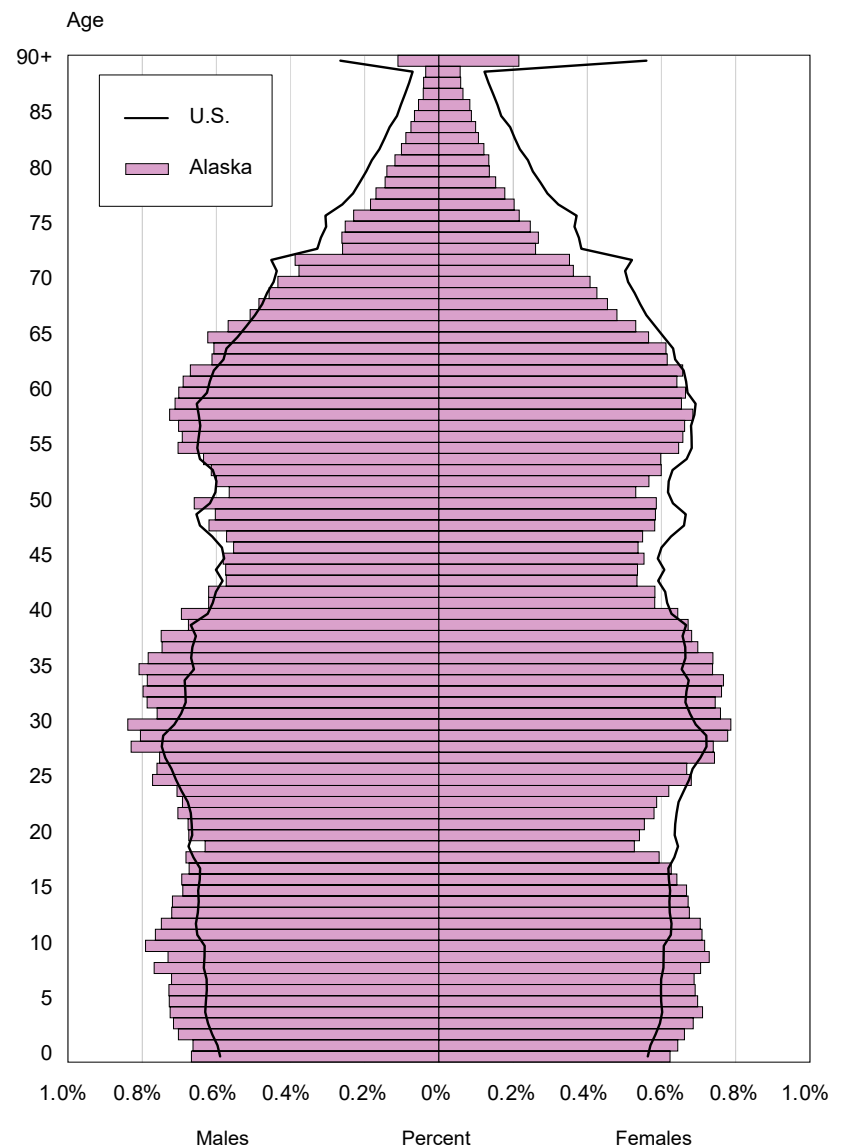
The population aged 25 to 34 is composed of young adults in prime ages for forming families, and people in this age group contribute heavily to the number of children under age 5. In 2019, 15 percent (111,959) of Alaska residents were 25 to 34 years old, the same percentage as in 2010 (103,125). This age group peaked in size in 1985 at 130,452, representing nearly a quarter of the

state's population that year. Alaska typically has strong net migration gains of people aged 25 to 34.

The size of Alaska's population aged 35 to 44 grew 4 percent from 2010 to 2019. The group was 13 percent of the state in 2019 with 96,854 people, and 13 percent of the state in 2010 with 92,974 people.

The 45-to-54 age group decreased from 16 percent (111,026) of the state in 2010 to 12 percent in 2019 (85,422) as baby boomers aged out of it. The affect of baby boomers aging can also be seen in Figure 1.6, with the 40-to-59 age group

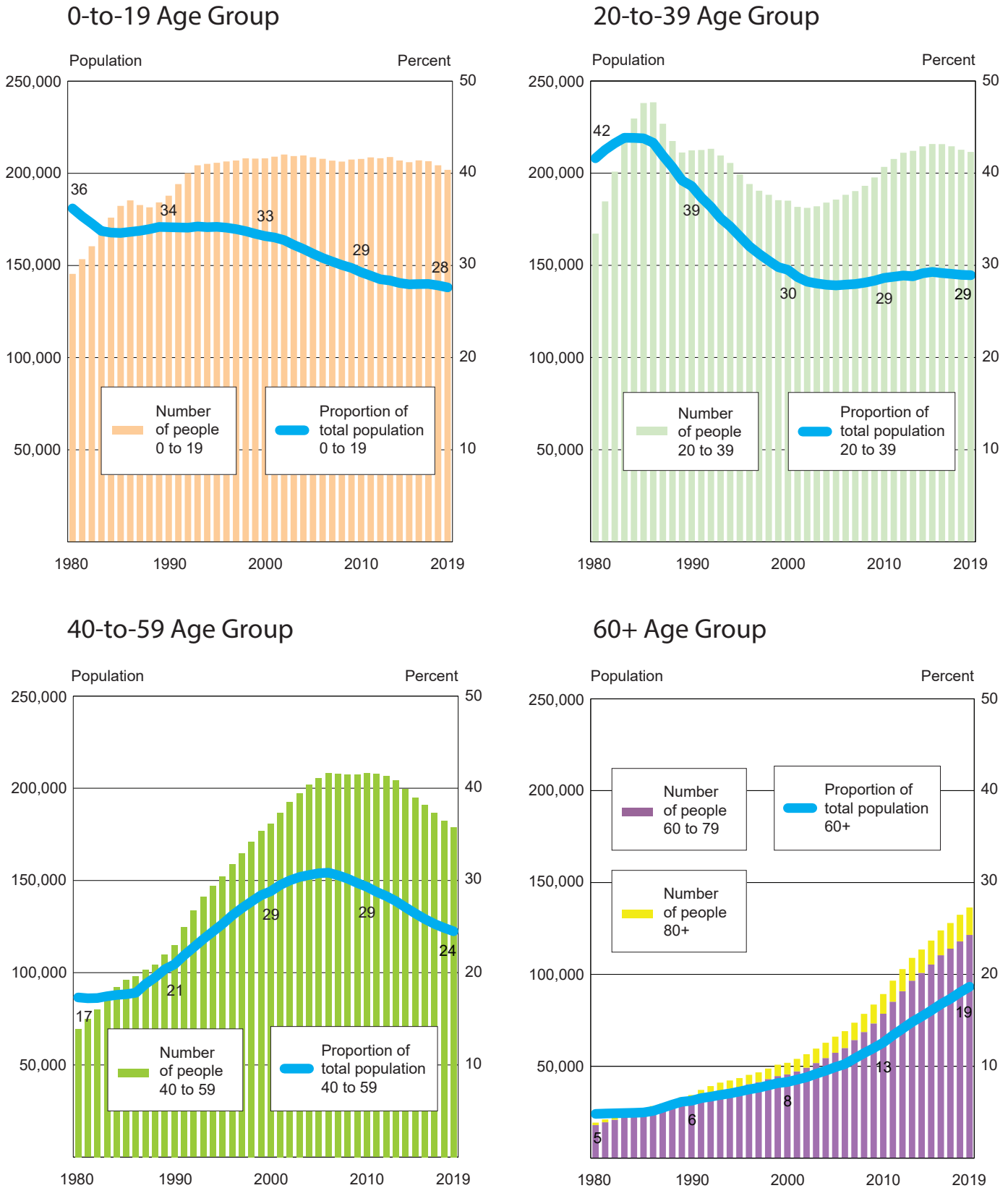
Figure 1.5
Alaska and U.S. Population by Age and Sex, 2019
(Percent Distribution)



Sources: Alaska Department of Labor and Workforce Development, Research and Analysis Section; and U.S. Census Bureau

Figure 1.6

Population by Age Group and Proportion of Total, 1980 to 2019



Source: Alaska Department of Labor and Workforce Development, Research and Analysis Section

steadily climbing until the mid-00s, plateauing for several years, then declining as more joined the 60-plus group.

Despite typical net migration losses of people aged 55 to 64, this group has grown sharply since 2010 as baby boomers in the state aged. The state had 97,281 in this group in 2019 (13 percent of the state total), up from 85,909 in 2010 (12 percent).

Alaskans aged 65 and older numbered 91,278 in 2019, and the size of Alaska’s population aged 55 to 64 suggests the number of seniors will increase dramatically over the next decade. The 65-plus group increased from 8 percent of the state total in 2010 to 12 percent in 2019.

The growth rate from 2010 to 2019 for seniors in Alaska was higher than any other state — but, as of 2019, Alaska’s percentage of senior citizens remained among the smallest of any state. In the U.S. as a whole, 16 percent of the population was 65 or older in 2019.

Median Age

Alaska’s population is younger than the national average but the gap is narrowing, largely due to the aging of Alaska’s large baby boomer population. (See Figure 1.5.) The U.S. median age in 2019 was 38.4, and the median age for Alaska was 35.5. Alaska had the fourth-youngest population

in the U.S. after Utah (31.3), the District of Columbia (34.2), and Texas (35.0). In 2010, the U.S. median age was 37.2, and Alaska’s was 33.8.

By race, the median ages of Alaskans in 2019 were: 39.0 for White alone, 29.6 for Alaska Native alone, 31.8 for Black alone, 36.5 for Asian alone, 28.2 for Hawaiian and Pacific Islander alone, and 19.8 for people of two or more races. The median age for people of Hispanic origin was 26.8.

The Alaska Native population is generally younger because of higher birth rates and a smaller baby boomer population. The Black, Hawaiian and Pacific Islander, and Hispanic populations are younger due to a combination of higher birth rates and the age and year of migration for the share who moved to Alaska. The low median age for those who are of two or more races is the result of an increasing proportion of multiracial children and, perhaps, a greater tendency of younger multiracial Alaskans to identify as such.

Voting Age Population

As of July 1, 2019, the voting age population (those 18 and older) in Alaska totaled 546,861. Of that population, the White alone group was 375,918 (69 percent), Alaska Native alone was 76,820 (14 percent), Asian alone was 37,256 (7 percent), Black alone was 20,329 (4 percent), Hawaiian or Pacific Islander alone was 7,101 (1 percent), and people of two or more races totaled 29,437 (5 percent). An estimated 34,606 voting-age Alaskans (6 percent) were of Hispanic origin.

Table 1.4
Alaska Population by Race and Ethnicity, 2010 and 2019

	April 1, 2010	July 1, 2019	Change 2010-2019
Total Population	710,231	731,007	20,776
Total Responses	763,945	791,515	27,570
White			
White Alone	483,851	477,041	-6,810
White Alone or in Combination	527,690	525,888	-1,802
Alaska Native or American Indian			
Alaska Native or American Indian Alone	106,287	113,714	7,427
Alaska Native or American Indian Alone or in Combination	139,782	148,042	8,260
Black or African American			
Black or African American Alone	24,442	26,895	2,453
Black or African American Alone or in Combination	34,168	39,017	4,849
Asian and Pacific Islander			
Asian and Pacific Islander Alone	46,545	58,519	11,974
Asian and Pacific Islander Alone or in Combination	62,305	78,568	16,263
Native Hawaiian or Other Pacific Islander Alone	7,662	10,603	2,941
Native Hawaiian or Other Pacific Islander Alone or in Combination	11,360	15,113	3,753
Two or more races	49,106	54,838	5,732
Ethnicity			
Hispanic or Latino (of any race)	39,252	52,842	13,590

Notes: Modified race data. “Total Responses” are greater than total population because individuals may report more than one race group.

Sources: Alaska Department of Labor and Workforce Development, Research and Analysis Section; and U.S. Census Bureau

Dependency

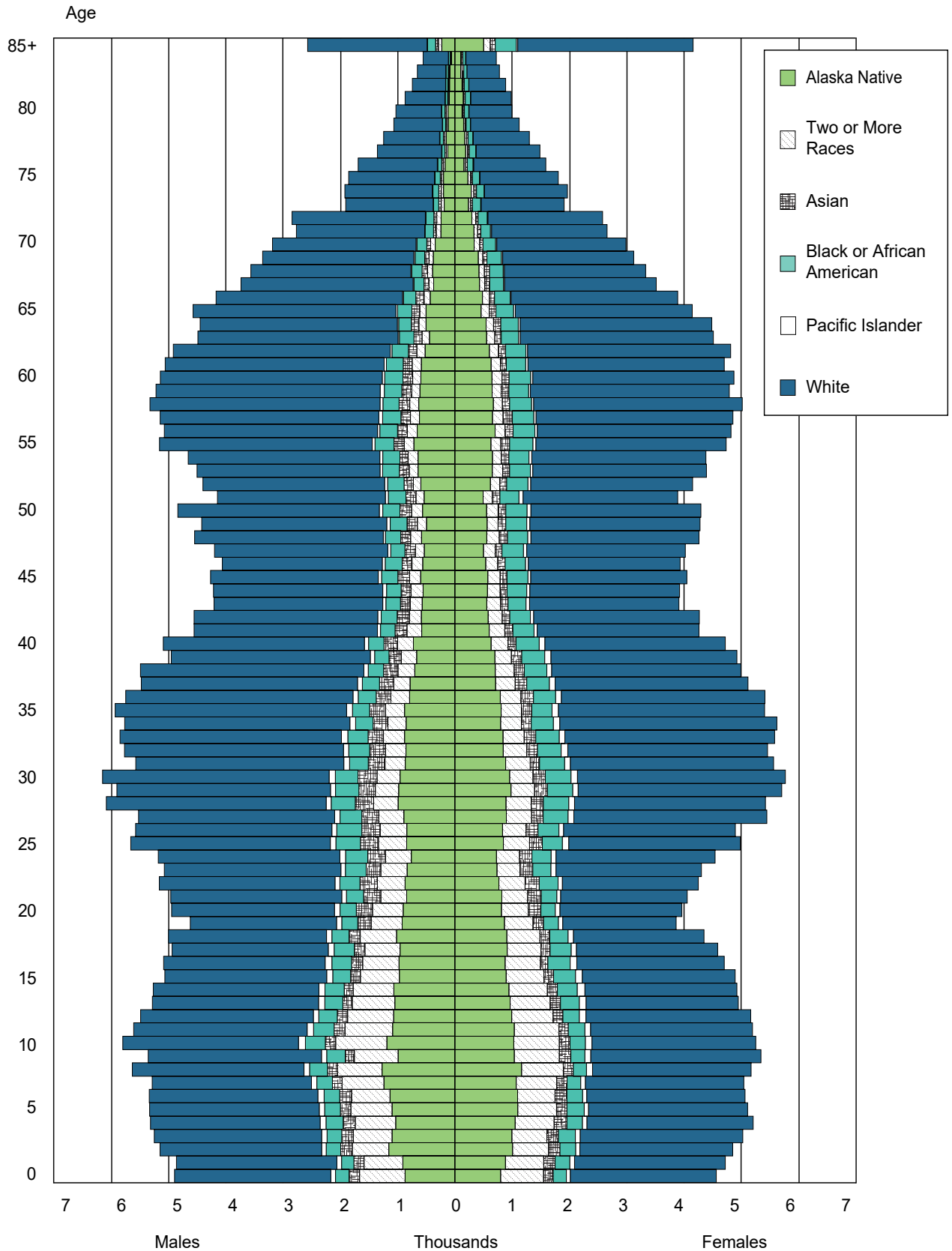
Dependency ratios are ratios of the working-age population (ages 18 to 64) to the young and old largely nonworking populations. In 2019, for every 100 Alaskans aged 18 to 64, there were 40 Alaskans younger than 18 (same as 2010) and 20 Alaskans 65 or older (up from 12 in 2010). For comparison, the U.S. had 36 children and 27 seniors for every 100 people of working age in 2019.

Male-to-Female Ratio

Alaska had 106 males for every 100 females in 2019 — much higher than the national ratio of 97 to 100, but down from 2010’s ratio of 109 to 100.

By race, the male-to-female ratio was 109 for White alone, 101 for

Figure 1.7
Alaska Population by Age, Race (Alone), and Sex, 2019



Source: Alaska Department of Labor and Workforce Development, Research and Analysis Section

Alaska Native alone, 123 for Black alone, 86 for Asian alone, and 100 for Hawaiian or Pacific Islander alone. The particularly high male-to-female ratio for Black Alaskans reflects the large share of the state’s Black population in the military. The low male-to-female ratio for Asian Alaskans reflects a nationwide phenomenon (93 Asian males for every 100 Asian females).

States with younger populations tend to have higher male-to-female ratios, in part because the ratio at birth is typically around 105 and also because life expectancy is generally lower for males, so the ratio decreases at higher ages. Employment can also affect male-to-female ratios for certain areas, such as the military, fishing, and mining in Alaska. Other states that had high ratios as of the Census Bureau’s 2019 population estimates were North Dakota (105) and Wyoming (104).

While Alaska had very large male-to-female ratios at some points in its history — including the gold rush era and during large military buildups — and continues to have the highest ratio in the nation, the difference is sometimes exaggerated. Some communities are heavily male due to local industries, but most have ratios close to the U.S. average.

As shown in Figure 1.8, the highest ratio of males to females was for the 20-to-24-year-old group, at 120. Ages 65-69 were also high at 108. The relatively high male-to-female ratio at higher ages in Alaska is because more young adult males moved to the state in the 1970s and 1980s than females.

Alaska Households and Living Arrangements

The Census Bureau counts all people as living in a housing unit, such as a house or apartment, or a group quarters facility, such as a dormitory or prison. A household includes all the people who occupy a housing unit as their usual place of

Table 1.5
Alaska Households with Children and Seniors, 2010 and 2019

	April 1, 2010	July 1, 2019	Change 2010-2019
Household population	683,879	704,019	20,140
Total households	258,058	257,175	-883
Households with one or more people younger than 18	93,873	90,553	-3,320
Households with one or more people age 65 or older	41,303	65,174	23,871
Persons per household	2.65	2.74	0.09
Group quarters population	26,352	26,988	636

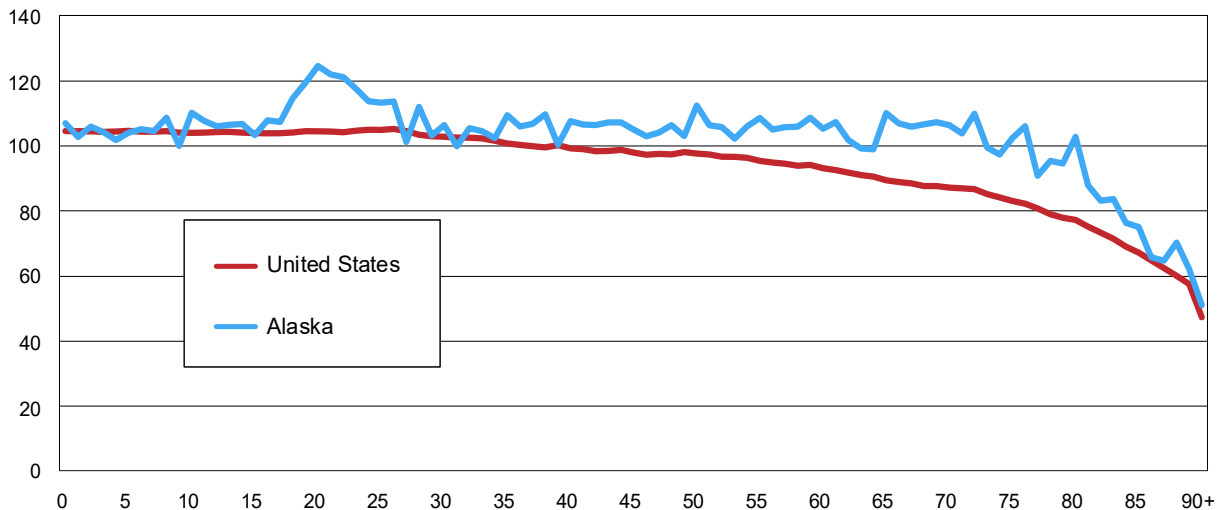
Sources: Alaska Department of Labor and Workforce Development, Research and Analysis Section; and U.S. Census Bureau

residence.

The number of households in Alaska decreased by 883 from 2010 to 2019, while the number of people per household increased from 2.65 to 2.74. Among Alaska households, 35 percent had one or more people younger than 18 in 2019, and 25 percent had one or more people 65 or older. (See Table 1.5.)

Four percent of the state’s population (26,988 people) lived in group quarters — prisons, college dorms, military barracks, nursing homes, residential treatment facilities, and fish processing and logging camp bunkhouses — in 2019, which was similar to 2010, when 26,352 people (also 4 percent) lived in group quarters.

Figure 1.8
Males Per 100 Females by Age, Alaska and the U.S., 2019



Sources: Alaska Department of Labor and Workforce Development, Research and Analysis Section; and U.S. Census Bureau

Table 1.6**Alaska Population by Age and Sex, April 1, 2010**

Age	Total	Male	Female	Age	Total	Male	Female	Age	Total	Male	Female
Under 1	10,828	5,590	5,238	45	10,629	5,528	5,101	90	361	130	231
1	11,006	5,687	5,319	46	10,591	5,558	5,033	91	258	86	172
2	10,897	5,665	5,232	47	11,097	5,748	5,349	92	216	72	144
3	10,777	5,486	5,291	48	11,102	5,722	5,380	93	150	40	110
4	10,488	5,468	5,020	49	11,307	5,842	5,465	94	129	32	97
5	10,177	5,158	5,019	50	11,923	6,314	5,609	95+	324	83	241
6	10,252	5,248	5,004	51	10,975	5,685	5,290	Total	710,231	369,628	340,603
7	10,155	5,178	4,977	52	11,415	6,001	5,414	Age	Total	Male	Female
8	10,096	5,217	4,879	53	11,201	5,715	5,486	0-4	53,996	27,896	26,100
9	10,207	5,237	4,970	54	10,786	5,573	5,213	5-9	50,887	26,038	24,849
10	10,537	5,512	5,025	55	11,408	5,931	5,477	10-14	50,816	26,147	24,669
11	10,073	5,158	4,915	56	10,303	5,452	4,851	15-19	52,141	27,179	24,962
12	9,913	5,052	4,861	57	10,080	5,336	4,744	20-24	54,419	29,706	24,713
13	10,177	5,210	4,967	58	9,537	5,033	4,504	25-29	55,419	29,307	26,112
14	10,116	5,215	4,901	59	8,643	4,642	4,001	30-34	47,706	24,861	22,845
15	10,324	5,254	5,070	60	8,686	4,693	3,993	35-39	45,833	23,731	22,102
16	10,578	5,424	5,154	61	7,785	4,191	3,594	40-44	47,141	24,646	22,495
17	10,777	5,647	5,130	62	7,325	3,931	3,394	45-49	54,726	28,398	26,328
18	10,498	5,470	5,028	63	6,879	3,665	3,214	50-54	56,300	29,288	27,012
19	9,964	5,384	4,580	64	5,263	2,751	2,512	55-59	49,971	26,394	23,577
20	10,628	5,828	4,800	65	5,210	2,764	2,446	60-64	35,938	19,231	16,707
21	10,577	5,824	4,753	66	4,893	2,603	2,290	65-69	22,202	11,714	10,488
22	10,859	5,880	4,979	67	4,523	2,395	2,128	70-74	13,148	6,662	6,486
23	10,787	5,877	4,910	68	3,993	2,053	1,940	75-79	8,892	4,150	4,742
24	11,568	6,297	5,271	69	3,583	1,899	1,684	80-84	5,985	2,620	3,365
25	11,575	6,176	5,399	70	3,150	1,611	1,539	85-89	3,273	1,217	2,056
26	11,198	5,957	5,241	71	2,759	1,407	1,352	90-94	1,114	360	754
27	11,311	5,931	5,380	72	2,674	1,381	1,293	16+	544,208	284,293	259,915
28	10,766	5,751	5,015	73	2,354	1,187	1,167	18+	522,853	273,222	249,631
29	10,569	5,492	5,077	74	2,211	1,076	1,135	65+	54,938	26,806	28,132
30	10,733	5,683	5,050	75	2,085	997	1,088	95+	324	83	241
31	9,453	4,949	4,504	76	1,869	905	964	Total	Male	Female	
32	9,628	5,000	4,628	77	1,756	804	952	Median Age	33.8	33.6	34.1
33	9,012	4,587	4,425	78	1,595	716	879	Males Per 100 Females			108.5
34	8,880	4,642	4,238	79	1,587	728	859	Youth Dependency (<18/18-64)			40.0
35	9,396	4,957	4,439	80	1,514	698	816	Aged Dependency (65+/18-64)			11.7
36	8,606	4,390	4,216	81	1,306	581	725				
37	8,820	4,530	4,290	82	1,185	520	665				
38	9,190	4,788	4,402	83	1,044	433	611				
39	9,821	5,066	4,755	84	936	388	548				
40	10,112	5,273	4,839	85	842	297	545				
41	9,118	4,801	4,317	86	789	312	477				
42	9,097	4,774	4,323	87	632	235	397				
43	9,250	4,803	4,447	88	552	213	339				
44	9,564	4,995	4,569	89	458	160	298				

Sources: Alaska Department of Labor and Workforce Development, Research and Analysis Section; and U.S. Census Bureau

Table 1.7
Alaska Population by Age and Sex, July 1, 2011

Age	Total	Male	Female	Age	Total	Male	Female	Age	Total	Male	Female
Under 1	11,423	5,895	5,528	45	10,077	5,156	4,921	90	352	131	221
1	10,735	5,406	5,329	46	9,832	5,177	4,655	91	350	116	234
2	11,154	5,897	5,257	47	10,353	5,360	4,993	92	223	71	152
3	10,926	5,640	5,286	48	10,928	5,680	5,248	93	173	48	125
4	11,028	5,620	5,408	49	11,023	5,657	5,366	94	118	35	83
5	10,698	5,595	5,103	50	12,022	6,308	5,714	95+	415	111	304
6	10,216	5,193	5,023	51	11,047	5,767	5,280	Total	722,262	375,357	346,905
7	10,313	5,216	5,097	52	11,109	5,807	5,302	Age	Total	Male	Female
8	10,265	5,351	4,914	53	11,264	5,798	5,466	0-4	55,266	28,458	26,808
9	9,998	5,040	4,958	54	11,091	5,731	5,360	5-9	51,490	26,395	25,095
10	10,442	5,399	5,043	55	11,224	5,829	5,395	10-14	51,284	26,353	24,931
11	10,437	5,397	5,040	56	10,771	5,496	5,275	15-19	50,635	26,387	24,248
12	10,145	5,203	4,942	57	10,384	5,411	4,973	20-24	55,206	30,088	25,118
13	10,036	5,063	4,973	58	10,146	5,472	4,674	25-29	57,251	30,331	26,920
14	10,224	5,291	4,933	59	9,381	4,929	4,452	30-34	50,466	26,204	24,262
15	10,081	5,183	4,898	60	9,078	4,843	4,235	35-39	44,777	23,217	21,560
16	10,256	5,321	4,935	61	8,240	4,453	3,787	40-44	47,104	24,553	22,551
17	10,412	5,353	5,059	62	7,980	4,222	3,758	45-49	52,213	27,030	25,183
18	10,114	5,389	4,725	63	6,942	3,660	3,282	50-54	56,533	29,411	27,122
19	9,772	5,141	4,631	64	7,125	3,798	3,327	55-59	51,906	27,137	24,769
20	10,751	6,000	4,751	65	5,337	2,888	2,449	60-64	39,365	20,976	18,389
21	11,233	6,229	5,004	66	4,995	2,603	2,392	65-69	23,665	12,447	11,218
22	11,022	5,952	5,070	67	4,781	2,536	2,245	70-74	14,399	7,389	7,010
23	11,125	5,921	5,204	68	4,619	2,438	2,181	75-79	9,270	4,399	4,871
24	11,075	5,986	5,089	69	3,933	1,982	1,951	80-84	6,329	2,787	3,542
25	12,147	6,573	5,574	70	3,669	1,947	1,722	85-89	3,472	1,283	2,189
26	11,377	6,026	5,351	71	3,042	1,557	1,485	90-94	1,216	401	815
27	11,081	5,739	5,342	72	2,763	1,439	1,324	16+	554,141	288,968	265,173
28	11,714	6,206	5,508	73	2,555	1,275	1,280	18+	533,473	278,294	255,179
29	10,932	5,787	5,145	74	2,370	1,171	1,199	65+	58,766	28,817	29,949
30	11,356	6,034	5,322	75	2,143	1,078	1,065	95+	415	111	304
31	10,336	5,300	5,036	76	2,029	974	1,055	Total	Male	Female	
32	9,945	5,226	4,719	77	1,826	858	968	Median Age	33.9	33.6	34.1
33	9,506	4,907	4,599	78	1,708	762	946	Males Per 100 Females			108.2
34	9,323	4,737	4,586	79	1,564	727	837	Youth Dependency (<18/18-64)			39.8
35	9,298	4,957	4,341	80	1,498	698	800	Aged Dependency (65+/18-64)			12.4
36	8,915	4,544	4,371	81	1,475	660	815				
37	8,710	4,521	4,189	82	1,257	553	704				
38	8,912	4,605	4,307	83	1,132	479	653				
39	8,942	4,590	4,352	84	967	397	570				
40	10,263	5,291	4,972	85	881	338	543				
41	9,435	4,872	4,563	86	816	303	513				
42	9,410	4,996	4,414	87	650	224	426				
43	8,868	4,625	4,243	88	588	233	355				
44	9,128	4,769	4,359	89	537	185	352				

Source: Alaska Department of Labor and Workforce Development, Research and Analysis Section

Table 1.8
Alaska Population by Age and Sex, July 1, 2012

Age	Total	Male	Female	Age	Total	Male	Female	Age	Total	Male	Female
Under 1	10,622	5,375	5,247	45	9,547	4,889	4,658	90	424	162	262
1	10,925	5,608	5,317	46	9,563	4,929	4,634	91	347	124	223
2	10,929	5,608	5,321	47	9,853	5,126	4,727	92	290	85	205
3	11,075	5,803	5,272	48	10,305	5,369	4,936	93	186	51	135
4	11,113	5,738	5,375	49	10,933	5,667	5,266	94	142	48	94
5	11,082	5,654	5,428	50	11,718	6,115	5,603	95+	435	113	322
6	10,549	5,472	5,077	51	11,239	5,776	5,463	Total	730,649	378,639	352,010
7	10,417	5,337	5,080	52	11,275	5,959	5,316	Age	Total	Male	Female
8	10,458	5,360	5,098	53	10,902	5,591	5,311	0-4	54,664	28,132	26,532
9	10,153	5,153	5,000	54	11,184	5,762	5,422	5-9	52,659	26,976	25,683
10	10,251	5,243	5,008	55	11,400	5,891	5,509	10-14	51,220	26,304	24,916
11	10,374	5,345	5,029	56	10,718	5,492	5,226	15-19	49,682	26,035	23,647
12	10,394	5,363	5,031	57	10,702	5,484	5,218	20-24	55,663	29,938	25,725
13	10,194	5,206	4,988	58	10,486	5,513	4,973	25-29	57,730	30,356	27,374
14	10,007	5,147	4,860	59	10,059	5,361	4,698	30-34	52,367	27,216	25,151
15	10,204	5,260	4,944	60	9,556	5,038	4,518	35-39	45,305	23,315	21,990
16	10,097	5,271	4,826	61	8,619	4,612	4,007	40-44	46,903	24,395	22,508
17	10,163	5,268	4,895	62	8,266	4,410	3,856	45-49	50,201	25,980	24,221
18	9,927	5,211	4,716	63	7,542	3,957	3,585	50-54	56,318	29,203	27,115
19	9,291	5,025	4,266	64	6,903	3,610	3,293	55-59	53,365	27,741	25,624
20	10,624	5,708	4,916	65	7,109	3,900	3,209	60-64	40,886	21,627	19,259
21	10,992	6,105	4,887	66	5,037	2,634	2,403	65-69	26,325	13,949	12,376
22	11,489	6,216	5,273	67	4,887	2,567	2,320	70-74	15,531	7,913	7,618
23	11,178	5,938	5,240	68	4,810	2,511	2,299	75-79	9,801	4,704	5,097
24	11,380	5,971	5,409	69	4,482	2,337	2,145	80-84	6,577	2,913	3,664
25	11,570	6,235	5,335	70	3,928	1,967	1,961	85-89	3,628	1,359	2,269
26	11,762	6,272	5,490	71	3,458	1,800	1,658	90-94	1,389	470	919
27	11,506	5,892	5,614	72	2,967	1,523	1,444	16+	561,902	291,967	269,935
28	11,382	5,939	5,443	73	2,603	1,341	1,262	18+	541,642	281,428	260,214
29	11,510	6,018	5,492	74	2,575	1,282	1,293	65+	63,686	31,421	32,265
30	11,647	6,169	5,478	75	2,306	1,143	1,163	95+	435	113	322
31	10,797	5,640	5,157	76	2,070	1,040	1,030	Total	Male	Female	
32	10,628	5,405	5,223	77	1,959	938	1,021	Median Age	34.1	33.9	34.3
33	9,844	5,130	4,714	78	1,779	824	955	Males Per 100 Females			107.6
34	9,451	4,872	4,579	79	1,687	759	928	Youth Dependency (<18/18-64)			39.5
35	9,872	5,091	4,781	80	1,512	713	799	Aged Dependency (65+/18-64)			13.3
36	8,830	4,581	4,249	81	1,464	654	810				
37	8,996	4,611	4,385	82	1,379	597	782				
38	8,782	4,606	4,176	83	1,208	527	681				
39	8,825	4,426	4,399	84	1,014	422	592				
40	9,478	4,870	4,608	85	901	361	540				
41	9,598	4,973	4,625	86	858	339	519				
42	9,631	5,032	4,599	87	687	241	446				
43	9,338	4,876	4,462	88	602	213	389				
44	8,858	4,644	4,214	89	580	205	375				

Source: Alaska Department of Labor and Workforce Development, Research and Analysis Section

Table 1.9
Alaska Population by Age and Sex, July 1, 2013

Age	Total	Male	Female	Age	Total	Male	Female	Age	Total	Male	Female
Under 1	10,605	5,465	5,140	45	9,303	4,829	4,474	90	439	173	266
1	10,458	5,250	5,208	46	9,048	4,647	4,401	91	400	143	257
2	11,019	5,752	5,267	47	9,480	4,799	4,681	92	276	91	185
3	10,920	5,559	5,361	48	9,776	5,109	4,667	93	214	55	159
4	11,200	5,934	5,266	49	10,272	5,315	4,957	94	159	50	109
5	11,279	5,868	5,411	50	11,648	6,095	5,553	95+	455	133	322
6	10,911	5,499	5,412	51	10,923	5,571	5,352	Total	736,077	380,584	355,493
7	10,657	5,580	5,077	52	11,430	5,969	5,461	Age	Total	Male	Female
8	10,614	5,502	5,112	53	11,072	5,780	5,292	0-4	54,202	27,960	26,242
9	10,353	5,155	5,198	54	10,899	5,580	5,319	5-9	53,814	27,604	26,210
10	10,356	5,342	5,014	55	11,564	5,994	5,570	10-14	51,788	26,688	25,100
11	10,203	5,232	4,971	56	10,862	5,536	5,326	15-19	49,018	25,579	23,439
12	10,412	5,348	5,064	57	10,641	5,468	5,173	20-24	54,898	29,477	25,421
13	10,493	5,389	5,104	58	10,703	5,483	5,220	25-29	57,151	29,767	27,384
14	10,324	5,377	4,947	59	10,297	5,370	4,927	30-34	54,250	28,085	26,165
15	10,086	5,156	4,930	60	10,253	5,507	4,746	35-39	45,821	23,648	22,173
16	10,191	5,285	4,906	61	9,005	4,762	4,243	40-44	46,480	23,917	22,563
17	10,033	5,209	4,824	62	8,608	4,564	4,044	45-49	47,879	24,699	23,180
18	9,667	5,080	4,587	63	7,744	4,079	3,665	50-54	55,972	28,995	26,977
19	9,041	4,849	4,192	64	7,401	3,860	3,541	55-59	54,067	27,851	26,216
20	10,076	5,552	4,524	65	6,906	3,705	3,201	60-64	43,011	22,772	20,239
21	10,781	5,784	4,997	66	6,682	3,584	3,098	65-69	28,034	14,803	13,231
22	11,148	6,097	5,051	67	4,884	2,556	2,328	70-74	16,908	8,648	8,260
23	11,514	6,075	5,439	68	4,907	2,542	2,365	75-79	10,388	5,053	5,335
24	11,379	5,969	5,410	69	4,655	2,416	2,239	80-84	6,757	2,991	3,766
25	11,761	6,133	5,628	70	4,436	2,329	2,107	85-89	3,696	1,402	2,294
26	11,092	5,900	5,192	71	3,697	1,826	1,871	90-94	1,488	512	976
27	11,571	6,021	5,550	72	3,338	1,744	1,594	16+	566,187	293,176	273,011
28	11,545	5,937	5,608	73	2,825	1,426	1,399	18+	545,963	282,682	263,281
29	11,182	5,776	5,406	74	2,612	1,323	1,289	65+	67,726	33,542	34,184
30	12,311	6,508	5,803	75	2,485	1,253	1,232	95+	455	133	322
31	10,883	5,613	5,270	76	2,232	1,110	1,122	Total	Male	Female	
32	10,926	5,648	5,278	77	2,016	986	1,030	Median Age	34.3	34.0	34.5
33	10,434	5,258	5,176	78	1,913	891	1,022	Males Per 100 Females			107.1
34	9,696	5,058	4,638	79	1,742	813	929	Youth Dependency (<18/18-64)			39.8
35	9,902	5,190	4,712	80	1,553	710	843	Aged Dependency (65+/18-64)			14.2
36	9,396	4,746	4,650	81	1,463	667	796				
37	8,839	4,589	4,250	82	1,374	612	762				
38	9,016	4,653	4,363	83	1,286	545	741				
39	8,668	4,470	4,198	84	1,081	457	624				
40	9,289	4,656	4,633	85	947	375	572				
41	8,804	4,508	4,296	86	860	351	509				
42	9,727	5,073	4,654	87	717	266	451				
43	9,397	4,824	4,573	88	613	231	382				
44	9,263	4,856	4,407	89	559	179	380				

Source: Alaska Department of Labor and Workforce Development, Research and Analysis Section

Table 1.10

Alaska Population by Age and Sex, July 1, 2014

Age	Total	Male	Female	Age	Total	Male	Female	Age	Total	Male	Female
Under 1	10,651	5,361	5,290	45	9,685	5,063	4,622	90	411	151	260
1	10,501	5,329	5,172	46	8,700	4,559	4,141	91	415	153	262
2	10,437	5,357	5,080	47	8,925	4,533	4,392	92	331	112	219
3	10,856	5,581	5,275	48	9,346	4,757	4,589	93	215	64	151
4	10,949	5,602	5,347	49	9,630	5,007	4,623	94	164	48	116
5	11,120	5,880	5,240	50	10,793	5,678	5,115	95+	518	158	360
6	10,967	5,654	5,313	51	10,724	5,512	5,212	Total	736,416	381,298	355,118
7	10,903	5,593	5,310	52	10,939	5,676	5,263	Age	Total	Male	Female
8	10,620	5,638	4,982	53	11,169	5,771	5,398	0-4	53,394	27,230	26,164
9	10,332	5,231	5,101	54	10,884	5,711	5,173	5-9	53,942	27,996	25,946
10	10,411	5,260	5,151	55	11,113	5,733	5,380	10-14	51,178	26,283	24,895
11	10,172	5,242	4,930	56	10,899	5,589	5,310	15-19	48,447	25,317	23,130
12	9,974	5,094	4,880	57	10,598	5,435	5,163	20-24	54,438	29,541	24,897
13	10,335	5,301	5,034	58	10,553	5,455	5,098	25-29	57,677	30,178	27,499
14	10,286	5,386	4,900	59	10,418	5,310	5,108	30-34	55,878	28,929	26,949
15	10,170	5,253	4,917	60	10,312	5,425	4,887	35-39	46,571	24,078	22,493
16	9,975	5,164	4,811	61	9,550	5,134	4,416	40-44	45,129	23,329	21,800
17	9,992	5,178	4,814	62	8,871	4,639	4,232	45-49	46,286	23,919	22,367
18	9,513	5,007	4,506	63	7,911	4,106	3,805	50-54	54,509	28,348	26,161
19	8,797	4,715	4,082	64	7,597	3,981	3,616	55-59	53,581	27,522	26,059
20	9,759	5,365	4,394	65	7,267	3,894	3,373	60-64	44,241	23,285	20,956
21	10,413	5,785	4,628	66	6,421	3,378	3,043	65-69	29,635	15,646	13,989
22	11,107	5,931	5,176	67	6,463	3,457	3,006	70-74	18,013	9,197	8,816
23	11,393	6,224	5,169	68	4,850	2,519	2,331	75-79	10,751	5,260	5,491
24	11,766	6,236	5,530	69	4,634	2,398	2,236	80-84	6,878	3,076	3,802
25	11,832	6,238	5,594	70	4,556	2,357	2,199	85-89	3,814	1,478	2,336
26	11,302	5,908	5,394	71	4,092	2,125	1,967	90-94	1,536	528	1,008
27	11,184	5,844	5,340	72	3,539	1,773	1,766	16+	567,732	294,536	273,196
28	11,879	6,271	5,608	73	3,051	1,559	1,492	18+	547,765	284,194	263,571
29	11,480	5,917	5,563	74	2,775	1,383	1,392	65+	71,145	35,343	35,802
30	12,013	6,269	5,744	75	2,498	1,260	1,238	95+	518	158	360
31	11,629	6,111	5,518	76	2,358	1,192	1,166	Total	Male	Female	
32	11,127	5,730	5,397	77	2,115	1,008	1,107	Median Age	34.3	34.0	34.5
33	10,807	5,608	5,199	78	1,927	922	1,005	Males Per 100 Females			107.4
34	10,302	5,211	5,091	79	1,853	878	975	Youth Dependency (<18/18-64)			39.6
35	10,203	5,405	4,798	80	1,613	767	846	Aged Dependency (65+/18-64)			14.9
36	9,320	4,776	4,544	81	1,489	643	846				
37	9,333	4,762	4,571	82	1,349	612	737				
38	8,872	4,660	4,212	83	1,275	565	710				
39	8,843	4,475	4,368	84	1,152	489	663				
40	9,030	4,643	4,387	85	1,004	399	605				
41	8,549	4,338	4,211	86	902	366	536				
42	8,892	4,662	4,230	87	698	267	431				
43	9,414	4,829	4,585	88	641	254	387				
44	9,244	4,857	4,387	89	569	192	377				

Source: Alaska Department of Labor and Workforce Development, Research and Analysis Section

Table 1.11
Alaska Population by Age and Sex, July 1, 2015

Age	Total	Male	Female	Age	Total	Male	Female	Age	Total	Male	Female
Under 1	10,734	5,409	5,325	45	9,639	4,956	4,683	90	443	160	283
1	10,473	5,261	5,212	46	9,012	4,736	4,276	91	386	131	255
2	10,615	5,532	5,083	47	8,578	4,427	4,151	92	331	106	225
3	10,335	5,234	5,101	48	8,813	4,541	4,272	93	253	77	176
4	10,866	5,630	5,236	49	9,222	4,673	4,549	94	164	55	109
5	10,882	5,556	5,326	50	10,179	5,396	4,783	95+	557	176	381
6	10,960	5,735	5,225	51	9,999	5,190	4,809	Total	736,989	381,789	355,200
7	10,938	5,659	5,279	52	10,736	5,615	5,121	Age	Total	Male	Female
8	11,015	5,722	5,293	53	10,677	5,499	5,178	0-4	53,023	27,066	25,957
9	10,326	5,355	4,971	54	10,961	5,669	5,292	5-9	54,121	28,027	26,094
10	10,451	5,366	5,085	55	11,183	5,924	5,259	10-14	50,851	26,083	24,768
11	10,184	5,152	5,032	56	10,420	5,299	5,121	15-19	48,041	25,190	22,851
12	10,014	5,141	4,873	57	10,669	5,487	5,182	20-24	52,876	28,811	24,065
13	9,953	5,054	4,899	58	10,522	5,400	5,122	25-29	58,180	30,514	27,666
14	10,249	5,370	4,879	59	10,285	5,268	5,017	30-34	56,926	29,543	27,383
15	10,222	5,310	4,912	60	10,463	5,410	5,053	35-39	47,806	24,729	23,077
16	10,085	5,299	4,786	61	9,635	5,098	4,537	40-44	43,944	22,726	21,218
17	9,748	5,043	4,705	62	9,446	5,018	4,428	45-49	45,264	23,333	21,931
18	9,442	4,963	4,479	63	8,256	4,249	4,007	50-54	52,552	27,369	25,183
19	8,544	4,575	3,969	64	7,748	4,009	3,739	55-59	53,079	27,378	25,701
20	9,364	5,098	4,266	65	7,521	4,041	3,480	60-64	45,548	23,784	21,764
21	9,920	5,492	4,428	66	6,785	3,569	3,216	65-69	31,459	16,600	14,859
22	10,619	5,851	4,768	67	6,172	3,256	2,916	70-74	19,082	9,743	9,339
23	11,169	5,880	5,289	68	6,375	3,360	3,015	75-79	11,154	5,487	5,667
24	11,804	6,490	5,314	69	4,606	2,374	2,232	80-84	7,007	3,145	3,862
25	12,254	6,552	5,702	70	4,595	2,357	2,238	85-89	3,942	1,556	2,386
26	11,472	6,037	5,435	71	4,230	2,154	2,076	90-94	1,577	529	1,048
27	11,340	5,776	5,564	72	3,922	2,057	1,865	16+	568,772	295,303	273,469
28	11,415	6,019	5,396	73	3,300	1,628	1,672	18+	548,939	284,961	263,978
29	11,699	6,130	5,569	74	3,035	1,547	1,488	65+	74,778	37,236	37,542
30	12,213	6,377	5,836	75	2,657	1,320	1,337	95+	557	176	381
31	11,251	5,789	5,462	76	2,374	1,202	1,172	Total	Male	Female	
32	11,783	6,149	5,634	77	2,238	1,096	1,142	Median Age	34.5	34.2	34.8
33	10,971	5,615	5,356	78	1,995	943	1,052	Males Per 100 Females			107.5
34	10,708	5,613	5,095	79	1,890	926	964	Youth Dependency (<18/18-64)			39.7
35	10,812	5,605	5,207	80	1,728	839	889	Aged Dependency (65+/18-64)			15.8
36	9,599	4,982	4,617	81	1,554	706	848				
37	9,382	4,843	4,539	82	1,358	577	781				
38	9,334	4,805	4,529	83	1,252	551	701				
39	8,679	4,494	4,185	84	1,115	472	643				
40	9,146	4,686	4,460	85	1,070	428	642				
41	8,250	4,259	3,991	86	929	378	551				
42	8,568	4,419	4,149	87	734	289	445				
43	8,702	4,505	4,197	88	625	255	370				
44	9,278	4,857	4,421	89	584	206	378				

Source: Alaska Department of Labor and Workforce Development, Research and Analysis Section

Table 1.12
Alaska Population by Age and Sex, July 1, 2016

Age	Total	Male	Female	Age	Total	Male	Female	Age	Total	Male	Female
Under 1	10,812	5,593	5,219	45	9,752	5,046	4,706	90	440	167	273
1	10,512	5,243	5,269	46	9,103	4,666	4,437	91	411	137	274
2	10,564	5,433	5,131	47	8,909	4,607	4,302	92	335	98	237
3	10,594	5,445	5,149	48	8,457	4,384	4,073	93	275	83	192
4	10,486	5,350	5,136	49	8,682	4,434	4,248	94	202	77	125
5	10,892	5,637	5,255	50	9,805	5,065	4,740	95+	554	163	391
6	10,798	5,464	5,334	51	9,429	4,878	4,551	Total	739,649	382,076	357,573
7	11,098	5,867	5,231	52	10,045	5,284	4,761				
8	11,061	5,807	5,254	53	10,475	5,411	5,064	Age	Total	Male	Female
9	10,862	5,479	5,383	54	10,498	5,398	5,100	0-4	52,968	27,064	25,904
10	10,607	5,559	5,048	55	11,284	5,856	5,428	5-9	54,711	28,254	26,457
11	10,415	5,315	5,100	56	10,536	5,488	5,048	10-14	51,234	26,284	24,950
12	10,140	5,124	5,016	57	10,270	5,245	5,025	15-19	48,092	25,321	22,771
13	10,092	5,134	4,958	58	10,616	5,487	5,129	20-24	50,600	27,264	23,336
14	9,980	5,152	4,828	59	10,362	5,273	5,089	25-29	57,871	30,195	27,676
15	10,224	5,301	4,923	60	10,389	5,342	5,047	30-34	57,677	29,816	27,861
16	10,212	5,394	4,818	61	9,821	5,078	4,743	35-39	49,611	25,655	23,956
17	9,928	5,230	4,698	62	9,684	5,057	4,627	40-44	42,773	22,062	20,711
18	9,228	4,843	4,385	63	8,835	4,613	4,222	45-49	44,903	23,137	21,766
19	8,500	4,553	3,947	64	8,166	4,174	3,992	50-54	50,252	26,036	24,216
20	9,101	4,949	4,152	65	7,689	4,097	3,592	55-59	53,068	27,349	25,719
21	9,565	5,248	4,317	66	7,062	3,720	3,342	60-64	46,895	24,264	22,631
22	10,128	5,514	4,614	67	6,592	3,461	3,131	65-69	33,643	17,720	15,923
23	10,525	5,683	4,842	68	6,179	3,226	2,953	70-74	20,031	10,169	9,862
24	11,281	5,870	5,411	69	6,121	3,216	2,905	75-79	11,814	5,852	5,962
25	12,243	6,667	5,576	70	4,621	2,369	2,252	80-84	7,220	3,269	3,951
26	11,573	6,047	5,526	71	4,344	2,182	2,162	85-89	4,069	1,640	2,429
27	11,395	5,793	5,602	72	4,115	2,125	1,990	90-94	1,663	562	1,101
28	11,523	5,870	5,653	73	3,647	1,885	1,762	16+	570,512	295,173	275,339
29	11,137	5,818	5,319	74	3,304	1,608	1,696	18+	550,372	284,549	265,823
30	12,401	6,551	5,850	75	2,933	1,499	1,434	65+	78,994	39,375	39,619
31	11,505	5,902	5,603	76	2,491	1,249	1,242	95+	554	163	391
32	11,332	5,772	5,560	77	2,273	1,133	1,140				
33	11,580	6,010	5,570	78	2,161	1,035	1,126				
34	10,859	5,581	5,278	79	1,956	936	1,020				
35	11,199	5,935	5,264	80	1,759	874	885				
36	10,257	5,176	5,081	81	1,657	766	891				
37	9,555	4,987	4,568	82	1,438	638	800				
38	9,415	4,890	4,525	83	1,273	520	753				
39	9,185	4,667	4,518	84	1,093	471	622				
40	9,048	4,659	4,389	85	1,025	426	599				
41	8,440	4,330	4,110	86	1,020	420	600				
42	8,291	4,312	3,979	87	796	310	486				
43	8,379	4,226	4,153	88	653	274	379				
44	8,615	4,535	4,080	89	575	210	365				

	Total	Male	Female
Median Age	34.7	34.4	35.0
Males Per 100 Females			106.9
Youth Dependency (<18/18-64)			40.2
Aged Dependency (65+/18-64)			16.8

Source: Alaska Department of Labor and Workforce Development, Research and Analysis Section

Table 1.13
Alaska Population by Age and Sex, July 1, 2017

Age	Total	Male	Female	Age	Total	Male	Female	Age	Total	Male	Female
Under 1	10,439	5,241	5,198	45	8,949	4,622	4,327	90	437	175	262
1	10,303	5,235	5,068	46	9,082	4,716	4,366	91	406	143	263
2	10,586	5,387	5,199	47	8,948	4,519	4,429	92	347	112	235
3	10,516	5,312	5,204	48	8,811	4,602	4,209	93	260	67	193
4	10,645	5,511	5,134	49	8,312	4,297	4,015	94	210	71	139
5	10,457	5,332	5,125	50	9,185	4,778	4,407	95+	607	202	405
6	10,779	5,528	5,251	51	9,052	4,579	4,473	Total	737,783	379,831	357,952
7	10,893	5,532	5,361	52	9,440	4,947	4,493				
8	11,190	5,944	5,246	53	9,782	5,050	4,732				
9	10,870	5,548	5,322	54	10,238	5,274	4,964	Age	Total	Male	Female
10	11,063	5,688	5,375	55	10,751	5,549	5,202	0-4	52,489	26,686	25,803
11	10,474	5,456	5,018	56	10,605	5,422	5,183	5-9	54,189	27,884	26,305
12	10,310	5,272	5,038	57	10,345	5,429	4,916	10-14	52,105	26,722	25,383
13	10,203	5,103	5,100	58	10,172	5,188	4,984	15-19	47,769	25,113	22,656
14	10,055	5,203	4,852	59	10,310	5,247	5,063	20-24	48,757	26,327	22,430
15	9,871	5,051	4,820	60	10,351	5,290	5,061	25-29	57,360	29,664	27,696
16	10,139	5,335	4,804	61	9,638	4,943	4,695	30-34	57,493	29,677	27,816
17	10,027	5,269	4,758	62	9,719	4,926	4,793	35-39	50,939	26,290	24,649
18	9,329	4,982	4,347	63	8,901	4,566	4,335	40-44	42,641	21,828	20,813
19	8,403	4,476	3,927	64	8,656	4,456	4,200	45-49	44,102	22,756	21,346
20	9,168	5,011	4,157	65	8,028	4,229	3,799	50-54	47,697	24,628	23,069
21	9,234	5,055	4,179	66	7,186	3,742	3,444	55-59	52,183	26,835	25,348
22	9,623	5,205	4,418	67	6,798	3,588	3,210	60-64	47,265	24,181	23,084
23	10,126	5,356	4,770	68	6,510	3,389	3,121	65-69	34,386	17,982	16,404
24	10,606	5,700	4,906	69	5,864	3,034	2,830	70-74	21,877	11,216	10,661
25	11,619	6,045	5,574	70	6,027	3,163	2,864	75-79	12,580	6,184	6,396
26	11,454	6,139	5,315	71	4,266	2,134	2,132	80-84	7,550	3,434	4,116
27	11,616	5,908	5,708	72	4,179	2,119	2,060	85-89	4,134	1,654	2,480
28	11,429	5,844	5,585	73	3,842	1,957	1,885	90-94	1,660	568	1,092
29	11,242	5,728	5,514	74	3,563	1,843	1,720				
30	11,731	6,142	5,589	75	3,140	1,519	1,621	16+	569,129	293,488	275,641
31	11,602	6,049	5,553	76	2,812	1,436	1,376	18+	548,963	282,884	266,079
32	11,672	5,943	5,729	77	2,333	1,133	1,200	65+	82,794	41,240	41,554
33	11,075	5,604	5,471	78	2,203	1,086	1,117	95+	607	202	405
34	11,413	5,939	5,474	79	2,092	1,010	1,082				
35	11,371	5,977	5,394	80	1,821	890	931				
36	10,555	5,432	5,123	81	1,691	808	883				
37	10,184	5,132	5,052	82	1,516	685	831				
38	9,594	5,016	4,578	83	1,362	585	777				
39	9,235	4,733	4,502	84	1,160	466	694				
40	9,554	4,831	4,723	85	1,007	416	591				
41	8,286	4,265	4,021	86	964	396	568				
42	8,473	4,413	4,060	87	842	332	510				
43	8,046	4,107	3,939	88	714	287	427				
44	8,282	4,212	4,070	89	607	223	384				

	Total	Male	Female
Median Age	34.9	34.6	35.2
Males Per 100 Females			106.1
Youth Dependency (<18/18-64)			40.5
Aged Dependency (65+/18-64)			17.8

Source: Alaska Department of Labor and Workforce Development, Research and Analysis Section

Table 1.14

Alaska Population by Age and Sex, July 1, 2018

Age	Total	Male	Female	Age	Total	Male	Female	Age	Total	Male	Female
Under 1	9,835	4,955	4,880	45	8,536	4,289	4,247	90	446	174	272
1	9,874	5,001	4,873	46	8,378	4,351	4,027	91	416	150	266
2	10,368	5,357	5,011	47	8,972	4,588	4,384	92	335	108	227
3	10,437	5,247	5,190	48	8,778	4,481	4,297	93	264	81	183
4	10,493	5,311	5,182	49	8,683	4,510	4,173	94	200	60	140
5	10,586	5,482	5,104	50	8,724	4,583	4,141	95+	658	211	447
6	10,267	5,195	5,072	51	8,494	4,341	4,153	Total	734,055	377,696	356,359
7	10,744	5,564	5,180	52	9,050	4,627	4,423	Age	Total	Male	Female
8	10,924	5,604	5,320	53	9,210	4,739	4,471	0-4	51,007	25,871	25,136
9	10,924	5,653	5,271	54	9,588	4,956	4,632	5-9	53,445	27,498	25,947
10	11,006	5,685	5,321	55	10,518	5,461	5,057	10-14	52,462	26,965	25,497
11	10,833	5,574	5,259	56	10,156	5,183	4,973	15-19	47,425	24,991	22,434
12	10,272	5,327	4,945	57	10,364	5,310	5,054	20-24	47,271	25,541	21,730
13	10,279	5,226	5,053	58	10,218	5,368	4,850	25-29	56,196	29,261	26,935
14	10,072	5,153	4,919	59	9,959	5,056	4,903	30-34	56,687	28,978	27,709
15	9,942	5,107	4,835	60	10,416	5,370	5,046	35-39	52,502	27,160	25,342
16	9,755	5,051	4,704	61	9,711	4,986	4,725	40-44	42,849	22,045	20,804
17	9,939	5,233	4,706	62	9,636	4,860	4,776	45-49	43,347	22,219	21,128
18	9,414	5,034	4,380	63	9,037	4,531	4,506	50-54	45,066	23,246	21,820
19	8,375	4,566	3,809	64	8,739	4,469	4,270	55-59	51,215	26,378	24,837
20	8,876	4,826	4,050	65	8,592	4,551	4,041	60-64	47,539	24,216	23,323
21	9,306	5,121	4,185	66	7,510	3,855	3,655	65-69	35,987	18,772	17,215
22	9,330	5,104	4,226	67	6,903	3,615	3,288	70-74	23,138	11,784	11,354
23	9,486	5,050	4,436	68	6,741	3,508	3,233	75-79	13,448	6,671	6,777
24	10,273	5,440	4,833	69	6,241	3,243	2,998	80-84	7,912	3,632	4,280
25	10,931	5,901	5,030	70	5,782	2,996	2,786	85-89	4,240	1,684	2,556
26	11,042	5,702	5,340	71	5,592	2,904	2,688	90-94	1,661	573	1,088
27	11,364	5,968	5,396	72	4,091	2,066	2,025	16+	567,199	292,255	274,944
28	11,639	5,974	5,665	73	3,860	1,906	1,954	18+	547,505	281,971	265,534
29	11,220	5,716	5,504	74	3,813	1,912	1,901	65+	87,044	43,327	43,717
30	11,781	6,033	5,748	75	3,419	1,749	1,670	95+	658	211	447
31	10,962	5,627	5,335	76	2,979	1,448	1,531	Total	Male	Female	
32	11,582	5,959	5,623	77	2,656	1,318	1,338	Median Age	35.2	35.0	35.5
33	11,487	5,806	5,681	78	2,231	1,073	1,158	Males Per 100 Females			106.0
34	10,875	5,553	5,322	79	2,163	1,083	1,080	Youth Dependency (<18/18-64)			40.5
35	11,928	6,295	5,633	80	1,960	949	1,011	Aged Dependency (65+/18-64)			18.9
36	10,644	5,458	5,186	81	1,756	802	954				
37	10,396	5,385	5,011	82	1,560	731	829				
38	10,113	5,149	4,964	83	1,422	622	800				
39	9,421	4,873	4,548	84	1,214	528	686				
40	9,579	4,914	4,665	85	1,058	405	653				
41	8,761	4,446	4,315	86	946	395	551				
42	8,296	4,345	3,951	87	813	316	497				
43	8,221	4,209	4,012	88	758	324	434				
44	7,992	4,131	3,861	89	665	244	421				

Source: Alaska Department of Labor and Workforce Development, Research and Analysis Section

Table 1.15
Alaska Population by Age and Sex, July 1, 2019

Age	Total	Male	Female	Age	Total	Male	Female	Age	Total	Male	Female
Under 1	9,430	4,877	4,553	45	8,290	4,250	4,040	90	482	184	298
1	9,553	4,845	4,708	46	7,968	4,045	3,923	91	418	151	267
2	9,969	5,132	4,837	47	8,196	4,183	4,013	92	324	108	216
3	10,243	5,231	5,012	48	8,781	4,529	4,252	93	254	75	179
4	10,491	5,296	5,195	49	8,672	4,404	4,268	94	229	80	149
5	10,410	5,312	5,098	50	9,106	4,822	4,284	95+	673	208	465
6	10,370	5,319	5,051	51	8,012	4,132	3,880	Total	731,007	376,257	354,750
7	10,297	5,267	5,030	52	8,523	4,384	4,139				
8	10,769	5,612	5,157	53	8,865	4,485	4,380				
9	10,664	5,336	5,328	54	9,009	4,639	4,370				
10	11,018	5,780	5,238	55	9,864	5,139	4,725				
11	10,771	5,588	5,183	56	9,864	5,057	4,807				
12	10,620	5,469	5,151	57	9,970	5,128	4,842				
13	10,198	5,263	4,935	58	10,310	5,307	5,003				
14	10,161	5,250	4,911	59	9,979	5,200	4,779				
15	9,927	5,048	4,879	60	9,985	5,125	4,860				
16	9,757	5,067	4,690	61	9,732	5,041	4,691				
17	9,498	4,921	4,577	62	9,700	4,898	4,802				
18	9,322	4,983	4,339	63	8,971	4,471	4,500				
19	8,457	4,605	3,852	64	8,906	4,433	4,473				
20	8,879	4,928	3,951	65	8,687	4,555	4,132				
21	8,990	4,943	4,047	66	8,033	4,154	3,879				
22	9,381	5,142	4,239	67	7,228	3,720	3,508				
23	9,347	5,055	4,292	68	6,871	3,548	3,323				
24	9,691	5,160	4,531	69	6,460	3,346	3,114				
25	10,613	5,641	4,972	70	6,151	3,173	2,978				
26	10,438	5,556	4,882	71	5,408	2,757	2,651				
27	10,936	5,505	5,431	72	5,405	2,832	2,573				
28	11,472	6,065	5,407	73	3,803	1,898	1,905				
29	11,573	5,882	5,691	74	3,873	1,912	1,961				
30	11,884	6,131	5,753	75	3,646	1,846	1,800				
31	11,101	5,552	5,549	76	3,264	1,681	1,583				
32	11,193	5,749	5,444	77	2,828	1,347	1,481				
33	11,396	5,828	5,568	78	2,538	1,240	1,298				
34	11,353	5,747	5,606	79	2,179	1,060	1,119				
35	11,303	5,910	5,393	80	2,019	1,024	995				
36	11,127	5,729	5,398	81	1,848	865	983				
37	10,558	5,456	5,102	82	1,624	738	886				
38	10,454	5,473	4,981	83	1,430	652	778				
39	9,844	4,934	4,910	84	1,274	552	722				
40	9,781	5,073	4,708	85	1,123	482	641				
41	8,789	4,537	4,252	86	1,012	402	610				
42	8,794	4,537	4,257	87	783	308	475				
43	8,092	4,190	3,902	88	731	302	429				
44	8,112	4,200	3,912	89	680	261	419				

Age	Total	Male	Female
0-4	49,686	25,381	24,305
5-9	52,510	26,846	25,664
10-14	52,768	27,350	25,418
15-19	46,961	24,624	22,337
20-24	46,288	25,228	21,060
25-29	55,032	28,649	26,383
30-34	56,927	29,007	27,920
35-39	53,286	27,502	25,784
40-44	43,568	22,537	21,031
45-49	41,907	21,411	20,496
50-54	43,515	22,462	21,053
55-59	49,987	25,831	24,156
60-64	47,294	23,968	23,326
65-69	37,279	19,323	17,956
70-74	24,640	12,572	12,068
75-79	14,455	7,174	7,281
80-84	8,195	3,831	4,364
85-89	4,329	1,755	2,574
90-94	1,707	598	1,109

16+	566,116	291,632	274,484
18+	546,861	281,644	265,217
65+	91,278	45,461	45,817
95+	673	208	465

	Total	Male	Female
Median Age	35.5	35.2	35.8
Males Per 100 Females			106.1
Youth Dependency (<18/18-64)			40.4
Aged Dependency (65+/18-64)			18.9

Source: Alaska Department of Labor and Workforce Development, Research and Analysis Section

Table 1.16**Alaska Population by Age, Race (Alone), and Sex, April 1, 2010**

Age	Total Population			White Alone			Alaska Native or American Indian Alone			Black or African American Alone		
	Total	Male	Female	Total	Male	Female	Total	Male	Female	Total	Male	Female
0-4	53,996	27,896	26,100	30,462	15,675	14,787	9,962	5,196	4,766	1,871	937	934
5-9	50,887	26,038	24,849	28,987	14,947	14,040	9,370	4,783	4,587	1,880	941	939
10-14	50,816	26,147	24,669	29,520	15,175	14,345	9,576	4,967	4,609	1,865	963	902
15-19	52,141	27,179	24,962	31,000	16,253	14,747	10,014	5,185	4,829	1,961	1,057	904
20-24	54,419	29,706	24,713	34,573	19,256	15,317	9,438	4,875	4,563	2,407	1,438	969
25-29	55,419	29,307	26,112	37,754	20,266	17,488	7,963	4,059	3,904	2,345	1,387	958
30-34	47,706	24,861	22,845	33,166	17,561	15,605	6,560	3,351	3,209	1,932	1,098	834
35-39	45,833	23,731	22,102	32,410	17,037	15,373	5,979	3,043	2,936	1,821	1,055	766
40-44	47,141	24,646	22,495	33,750	17,880	15,870	6,397	3,262	3,135	1,674	1,008	666
45-49	54,726	28,398	26,328	40,135	21,155	18,980	7,343	3,658	3,685	1,783	976	807
50-54	56,300	29,288	27,012	43,040	22,782	20,258	6,668	3,268	3,400	1,608	908	700
55-59	49,971	26,394	23,577	38,944	20,999	17,945	5,563	2,752	2,811	1,361	733	628
60-64	35,938	19,231	16,707	28,268	15,530	12,738	3,950	1,901	2,049	765	433	332
65-69	22,202	11,714	10,488	17,224	9,344	7,880	2,784	1,373	1,411	436	224	212
70-74	13,148	6,662	6,486	9,855	5,160	4,695	1,863	896	967	327	146	181
75-79	8,892	4,150	4,742	6,550	3,219	3,331	1,391	582	809	190	84	106
80-84	5,985	2,620	3,365	4,471	2,013	2,458	890	384	506	123	47	76
85+	4,711	1,660	3,051	3,742	1,324	2,418	576	201	375	93	35	58
Total	710,231	369,628	340,603	483,851	255,576	228,275	106,287	53,736	52,551	24,442	13,470	10,972

Age	Asian Alone			Native Hawaiian or Pacific Islander Alone			Two or More Races		
	Total	Male	Female	Total	Male	Female	Total	Male	Female
0-4	2,450	1,320	1,130	868	432	436	8,383	4,336	4,047
5-9	2,785	1,382	1,403	829	395	434	7,036	3,590	3,446
10-14	2,932	1,466	1,466	768	427	341	6,155	3,149	3,006
15-19	3,030	1,526	1,504	769	397	372	5,367	2,761	2,606
20-24	2,899	1,535	1,364	850	433	417	4,252	2,169	2,083
25-29	2,886	1,434	1,452	729	377	352	3,742	1,784	1,958
30-34	2,546	1,116	1,430	621	326	295	2,881	1,409	1,472
35-39	2,886	1,285	1,601	464	228	236	2,273	1,083	1,190
40-44	2,945	1,308	1,637	441	235	206	1,934	953	981
45-49	3,117	1,454	1,663	421	206	215	1,927	949	978
50-54	2,934	1,337	1,597	317	171	146	1,733	822	911
55-59	2,543	1,137	1,406	222	110	112	1,338	663	675
60-64	1,915	820	1,095	162	82	80	878	465	413
65-69	1,154	488	666	103	50	53	501	235	266
70-74	773	299	474	42	19	23	288	142	146
75-79	512	160	352	32	13	19	217	92	125
80-84	363	121	242	18	8	10	120	47	73
85+	213	69	144	6	1	5	81	30	51
Total	38,883	18,257	20,626	7,662	3,910	3,752	49,106	24,679	24,427

Note: Modified race data.

Sources: Alaska Department of Labor and Workforce Development, Research and Analysis Section; and U.S. Census Bureau

Table 1.17

Alaska Population by Age, Race (Alone or in Combination), Ethnicity, and Sex, April 1, 2010

Age	Total Responses			White Alone or in Combination			Alaska Native or Amer. Indian Alone or in Comb.			Black or African American Alone or in Combination		
	Total	Male	Female	Total	Male	Female	Total	Male	Female	Total	Male	Female
0-4	63,490	32,822	30,668	37,927	19,545	18,382	15,118	7,883	7,235	4,157	2,110	2,047
5-9	58,765	30,058	28,707	35,213	18,130	17,083	13,805	7,051	6,754	3,676	1,870	1,806
10-14	57,656	29,651	28,005	35,007	17,975	17,032	13,458	6,973	6,485	3,408	1,711	1,697
15-19	58,029	30,203	27,826	35,829	18,734	17,095	13,589	7,037	6,552	3,114	1,630	1,484
20-24	58,986	32,033	26,953	38,326	21,159	17,167	12,333	6,334	5,999	3,202	1,849	1,353
25-29	59,420	31,192	28,228	41,148	21,871	19,277	10,574	5,291	5,283	2,933	1,652	1,281
30-34	50,787	26,368	24,419	35,758	18,819	16,939	8,540	4,313	4,227	2,377	1,325	1,052
35-39	48,252	24,882	23,370	34,464	18,011	16,453	7,606	3,810	3,796	2,096	1,197	899
40-44	49,208	25,658	23,550	35,489	18,727	16,762	7,873	3,995	3,878	1,871	1,115	756
45-49	56,775	29,401	27,374	41,868	22,003	19,865	8,886	4,424	4,462	1,976	1,072	904
50-54	58,127	30,147	27,980	44,577	23,507	21,070	8,069	3,923	4,146	1,766	978	788
55-59	51,381	27,093	24,288	40,132	21,588	18,544	6,677	3,304	3,373	1,478	798	680
60-64	36,866	19,723	17,143	29,051	15,952	13,099	4,699	2,302	2,397	845	471	374
65-69	22,737	11,969	10,768	17,669	9,555	8,114	3,219	1,578	1,641	484	250	234
70-74	13,448	6,810	6,638	10,095	5,282	4,813	2,121	1,027	1,094	353	153	200
75-79	9,114	4,243	4,871	6,743	3,304	3,439	1,575	659	916	203	88	115
80-84	6,110	2,668	3,442	4,585	2,058	2,527	997	427	570	129	50	79
85+	4,794	1,690	3,104	3,809	1,347	2,462	643	227	416	100	36	64
Total	763,945	396,611	367,334	527,690	277,567	250,123	139,782	70,558	69,224	34,168	18,355	15,813

Age	Asian Alone or in Combination			Native Hawaiian or Pac. Is. Alone or in Combination			Hispanic or Latino Origin		
	Total	Male	Female	Total	Male	Female	Total	Male	Female
0-4	4,707	2,489	2,218	1,581	795	786	4,686	2,353	2,333
5-9	4,645	2,314	2,331	1,426	693	733	4,119	2,138	1,981
10-14	4,540	2,310	2,230	1,243	682	561	3,807	1,902	1,905
15-19	4,346	2,201	2,145	1,151	601	550	3,605	1,871	1,734
20-24	3,970	2,105	1,865	1,155	586	569	3,838	2,114	1,724
25-29	3,766	1,859	1,907	999	519	480	3,567	1,857	1,710
30-34	3,288	1,475	1,813	824	436	388	2,848	1,429	1,419
35-39	3,457	1,561	1,896	629	303	326	2,549	1,264	1,285
40-44	3,397	1,524	1,873	578	297	281	2,404	1,249	1,155
45-49	3,488	1,629	1,859	557	273	284	2,314	1,143	1,171
50-54	3,276	1,505	1,771	439	234	205	1,947	1,042	905
55-59	2,784	1,257	1,527	310	146	164	1,430	752	678
60-64	2,062	896	1,166	209	102	107	934	467	467
65-69	1,236	525	711	129	61	68	528	267	261
70-74	826	327	499	53	21	32	309	142	167
75-79	551	174	377	42	18	24	191	84	107
80-84	376	123	253	23	10	13	94	39	55
85+	230	77	153	12	3	9	82	18	64
Total	50,945	24,351	26,594	11,360	5,780	5,580	39,252	20,131	19,121

Notes: Modified race data. "Total Responses" are greater than total population because individuals may report more than one race group.

Sources: Alaska Department of Labor and Workforce Development, Research and Analysis Section; and U.S. Census Bureau

Table 1.18**Alaska Population by Age, Race (Alone), and Sex, July 1, 2011**

Age	Total Population			White Alone			Alaska Native or American Indian Alone			Black or African American Alone		
	Total	Male	Female	Total	Male	Female	Total	Male	Female	Total	Male	Female
0-4	55,266	28,458	26,808	31,015	15,880	15,135	10,667	5,523	5,144	1,972	1,050	922
5-9	51,490	26,395	25,095	29,225	15,120	14,105	9,478	4,828	4,650	1,874	906	968
10-14	51,284	26,353	24,931	29,373	15,099	14,274	9,639	4,981	4,658	1,961	1,017	944
15-19	50,635	26,387	24,248	29,910	15,638	14,272	9,622	4,971	4,651	1,945	1,047	898
20-24	55,206	30,088	25,118	34,712	19,350	15,362	9,617	4,932	4,685	2,536	1,516	1,020
25-29	57,251	30,331	26,920	38,736	20,763	17,973	8,414	4,341	4,073	2,342	1,378	964
30-34	50,466	26,204	24,262	35,062	18,458	16,604	6,804	3,472	3,332	2,125	1,243	882
35-39	44,777	23,217	21,560	31,221	16,450	14,771	5,968	3,045	2,923	1,824	1,062	762
40-44	47,104	24,553	22,551	33,906	17,957	15,949	5,996	3,031	2,965	1,731	1,020	711
45-49	52,213	27,030	25,183	37,709	19,812	17,897	7,228	3,606	3,622	1,733	967	766
50-54	56,533	29,411	27,122	42,763	22,581	20,182	6,875	3,396	3,479	1,675	970	705
55-59	51,906	27,137	24,769	40,394	21,529	18,865	5,726	2,809	2,917	1,415	765	650
60-64	39,365	20,976	18,389	30,821	16,866	13,955	4,353	2,112	2,241	904	493	411
65-69	23,665	12,447	11,218	18,407	9,974	8,433	2,802	1,343	1,459	487	248	239
70-74	14,399	7,389	7,010	10,880	5,754	5,126	1,994	962	1,032	322	150	172
75-79	9,270	4,399	4,871	6,838	3,414	3,424	1,406	605	801	224	92	132
80-84	6,329	2,787	3,542	4,742	2,169	2,573	902	373	529	124	50	74
85+	5,103	1,795	3,308	4,027	1,417	2,610	634	225	409	94	37	57
Total	722,262	375,357	346,905	489,741	258,231	231,510	108,125	54,555	53,570	25,288	14,011	11,277

Age	Asian Alone			Native Hawaiian or Pacific Islander Alone			Two or More Races		
	Total	Male	Female	Total	Male	Female	Total	Male	Female
0-4	2,481	1,333	1,148	855	423	432	8,276	4,249	4,027
5-9	2,819	1,410	1,409	877	424	453	7,217	3,707	3,510
10-14	3,087	1,536	1,551	843	449	394	6,381	3,271	3,110
15-19	3,033	1,552	1,481	772	404	368	5,353	2,775	2,578
20-24	3,042	1,611	1,431	841	426	415	4,458	2,253	2,205
25-29	3,109	1,537	1,572	801	413	388	3,849	1,899	1,950
30-34	2,739	1,189	1,550	670	351	319	3,066	1,491	1,575
35-39	2,883	1,285	1,598	509	261	248	2,372	1,114	1,258
40-44	2,994	1,320	1,674	473	236	237	2,004	989	1,015
45-49	3,174	1,475	1,699	437	213	224	1,932	957	975
50-54	3,096	1,434	1,662	350	202	148	1,774	828	946
55-59	2,687	1,220	1,467	251	121	130	1,433	693	740
60-64	2,098	889	1,209	185	91	94	1,004	525	479
65-69	1,319	559	760	118	56	62	532	267	265
70-74	829	337	492	51	25	26	323	161	162
75-79	544	187	357	36	15	21	222	86	136
80-84	398	128	270	23	11	12	140	56	84
85+	247	80	167	6	2	4	95	34	61
Total	40,579	19,082	21,497	8,098	4,123	3,975	50,431	25,355	25,076

Note: Modified race data.

Sources: Alaska Department of Labor and Workforce Development, Research and Analysis Section; and U.S. Census Bureau

Table 1.19

Alaska Population by Age, Race (Alone or in Combination), Ethnicity, and Sex, July 1, 2011

Age	Total Responses			White Alone or in Combination			Alaska Native or Amer. Indian Alone or in Comb.			Black or African American Alone or in Combination		
	Total	Male	Female	Total	Male	Female	Total	Male	Female	Total	Male	Female
0-4	64,656	33,301	31,355	38,387	19,673	18,714	15,761	8,163	7,598	4,230	2,202	2,028
5-9	59,592	30,558	29,034	35,611	18,404	17,207	13,935	7,125	6,810	3,759	1,885	1,874
10-14	58,379	29,997	28,382	35,054	18,001	17,053	13,567	7,016	6,551	3,597	1,816	1,781
15-19	56,524	29,428	27,096	34,747	18,140	16,607	13,181	6,835	6,346	3,141	1,646	1,495
20-24	60,016	32,512	27,504	38,635	21,317	17,318	12,612	6,418	6,194	3,429	1,978	1,451
25-29	61,372	32,348	29,024	42,213	22,458	19,755	11,076	5,646	5,430	2,965	1,672	1,293
30-34	53,756	27,809	25,947	37,821	19,787	18,034	8,891	4,483	4,408	2,619	1,494	1,125
35-39	47,306	24,408	22,898	33,356	17,446	15,910	7,621	3,812	3,809	2,132	1,220	912
40-44	49,250	25,614	23,636	35,698	18,829	16,869	7,513	3,792	3,721	1,943	1,132	811
45-49	54,275	28,044	26,231	39,437	20,661	18,776	8,750	4,367	4,383	1,933	1,067	866
50-54	58,405	30,281	28,124	44,322	23,303	21,019	8,293	4,047	4,246	1,842	1,046	796
55-59	53,411	27,867	25,544	41,654	22,134	19,520	6,904	3,375	3,529	1,542	835	707
60-64	40,426	21,531	18,895	31,712	17,337	14,375	5,204	2,559	2,645	997	537	460
65-69	24,228	12,733	11,495	18,875	10,212	8,663	3,263	1,574	1,689	533	275	258
70-74	14,736	7,556	7,180	11,151	5,895	5,256	2,280	1,108	1,172	349	158	191
75-79	9,499	4,487	5,012	7,035	3,495	3,540	1,593	676	917	239	96	143
80-84	6,473	2,843	3,630	4,876	2,223	2,653	1,026	425	601	131	52	79
85+	5,200	1,829	3,371	4,108	1,444	2,664	713	254	459	103	39	64
Total	777,504	403,146	374,358	534,692	280,759	253,933	142,183	71,675	70,508	35,484	19,150	16,334

Age	Asian Alone or in Combination			Native Hawaiian or Pac. Is. Alone or in Combination			Hispanic or Latino Origin		
	Total	Male	Female	Total	Male	Female	Total	Male	Female
0-4	4,713	2,480	2,233	1,565	783	782	5,092	2,546	2,546
5-9	4,789	2,405	2,384	1,498	739	759	4,212	2,188	2,024
10-14	4,822	2,446	2,376	1,339	718	621	3,938	1,993	1,945
15-19	4,312	2,211	2,101	1,143	596	547	3,780	1,982	1,798
20-24	4,172	2,211	1,961	1,168	588	580	4,245	2,394	1,851
25-29	4,032	2,001	2,031	1,086	571	515	3,968	2,112	1,856
30-34	3,533	1,571	1,962	892	474	418	3,278	1,683	1,595
35-39	3,505	1,587	1,918	692	343	349	2,631	1,318	1,313
40-44	3,482	1,560	1,922	614	301	313	2,513	1,271	1,242
45-49	3,570	1,662	1,908	585	287	298	2,320	1,140	1,180
50-54	3,464	1,614	1,850	484	271	213	2,077	1,081	996
55-59	2,958	1,358	1,600	353	165	188	1,548	805	743
60-64	2,271	981	1,290	242	117	125	1,052	514	538
65-69	1,406	601	805	151	71	80	613	309	304
70-74	894	369	525	62	26	36	352	159	193
75-79	583	200	383	49	20	29	198	94	104
80-84	411	130	281	29	13	16	112	41	71
85+	264	88	176	12	4	8	85	23	62
Total	53,181	25,475	27,706	11,964	6,087	5,877	42,014	21,653	20,361

Notes: Modified race data. "Total Responses" are greater than total population because individuals may report more than one race group.

Sources: Alaska Department of Labor and Workforce Development, Research and Analysis Section; and U.S. Census Bureau

Table 1.20

Alaska Population by Age, Race (Alone), and Sex, July 1, 2012

Age	Total Population			White Alone			Alaska Native or American Indian Alone			Black or African American Alone		
	Total	Male	Female	Total	Male	Female	Total	Male	Female	Total	Male	Female
0-4	54,664	28,132	26,532	30,478	15,554	14,924	10,967	5,677	5,290	1,996	1,064	932
5-9	52,659	26,976	25,683	29,836	15,379	14,457	9,712	5,019	4,693	1,828	895	933
10-14	51,220	26,304	24,916	29,110	15,010	14,100	9,593	4,898	4,695	1,963	1,002	961
15-19	49,682	26,035	23,647	29,030	15,235	13,795	9,298	4,875	4,423	2,009	1,078	931
20-24	55,663	29,938	25,725	34,638	19,129	15,509	9,692	4,858	4,834	2,777	1,657	1,120
25-29	57,730	30,356	27,374	38,838	20,642	18,196	8,570	4,412	4,158	2,395	1,404	991
30-34	52,367	27,216	25,151	36,263	19,123	17,140	7,038	3,571	3,467	2,275	1,355	920
35-39	45,305	23,315	21,990	31,406	16,429	14,977	6,064	3,079	2,985	1,869	1,081	788
40-44	46,903	24,395	22,508	33,590	17,767	15,823	5,796	2,897	2,899	1,828	1,066	762
45-49	50,201	25,980	24,221	35,871	18,841	17,030	7,080	3,567	3,513	1,741	1,010	731
50-54	56,318	29,203	27,115	42,262	22,228	20,034	6,929	3,399	3,530	1,773	1,007	766
55-59	53,365	27,741	25,624	41,204	21,781	19,423	5,904	2,894	3,010	1,573	864	709
60-64	40,886	21,627	19,259	31,828	17,319	14,509	4,554	2,198	2,356	1,022	540	482
65-69	26,325	13,949	12,376	20,654	11,271	9,383	2,962	1,399	1,563	528	274	254
70-74	15,531	7,913	7,618	11,868	6,226	5,642	2,040	974	1,066	322	147	175
75-79	9,801	4,704	5,097	7,234	3,638	3,596	1,439	634	805	246	108	138
80-84	6,577	2,913	3,664	4,943	2,290	2,653	930	379	551	131	51	80
85+	5,452	1,942	3,510	4,280	1,541	2,739	655	232	423	108	42	66
Total	730,649	378,639	352,010	493,333	259,403	233,930	109,223	54,962	54,261	26,384	14,645	11,739

Age	Asian Alone			Native Hawaiian or Pacific Islander Alone			Two or More Races		
	Total	Male	Female	Total	Male	Female	Total	Male	Female
0-4	2,424	1,299	1,125	871	447	424	7,928	4,091	3,837
5-9	2,858	1,413	1,445	960	448	512	7,465	3,822	3,643
10-14	3,206	1,624	1,582	878	458	420	6,470	3,312	3,158
15-19	3,118	1,608	1,510	797	419	378	5,430	2,820	2,610
20-24	3,166	1,659	1,507	863	422	441	4,527	2,213	2,314
25-29	3,210	1,592	1,618	828	404	424	3,889	1,902	1,987
30-34	2,860	1,246	1,614	734	378	356	3,197	1,543	1,654
35-39	2,956	1,293	1,663	554	288	266	2,456	1,145	1,311
40-44	3,126	1,419	1,707	520	263	257	2,043	983	1,060
45-49	3,189	1,417	1,772	460	224	236	1,860	921	939
50-54	3,154	1,496	1,658	400	227	173	1,800	846	954
55-59	2,889	1,335	1,554	276	137	139	1,519	730	789
60-64	2,238	939	1,299	205	100	105	1,039	531	508
65-69	1,445	633	812	127	63	64	609	309	300
70-74	892	368	524	62	26	36	347	172	175
75-79	614	210	404	39	20	19	229	94	135
80-84	406	131	275	25	9	16	142	53	89
85+	292	86	206	11	5	6	106	36	70
Total	42,043	19,768	22,275	8,610	4,338	4,272	51,056	25,523	25,533

Note: Modified race data.

Sources: Alaska Department of Labor and Workforce Development, Research and Analysis Section; and U.S. Census Bureau

Table 1.21

Alaska Population by Age, Race (Alone or in Combination), Ethnicity, and Sex, July 1, 2012

Age	Total Responses			White Alone or in Combination			Alaska Native or Amer. Indian Alone or in Comb.			Black or African American Alone or in Combination		
	Total	Male	Female	Total	Male	Female	Total	Male	Female	Total	Male	Female
0-4	63,664	32,797	30,867	37,526	19,201	18,325	15,851	8,215	7,636	4,154	2,169	1,985
5-9	61,042	31,256	29,786	36,446	18,762	17,684	14,257	7,358	6,899	3,802	1,913	1,889
10-14	58,428	30,005	28,423	34,865	17,944	16,921	13,512	6,925	6,587	3,645	1,823	1,822
15-19	55,672	29,128	26,544	33,940	17,783	16,157	12,842	6,726	6,116	3,260	1,702	1,558
20-24	60,551	32,330	28,221	38,624	21,064	17,560	12,714	6,309	6,405	3,698	2,123	1,575
25-29	61,883	32,372	29,511	42,348	22,342	20,006	11,237	5,705	5,532	3,032	1,704	1,328
30-34	55,797	28,880	26,917	39,134	20,498	18,636	9,195	4,608	4,587	2,792	1,616	1,176
35-39	47,947	24,548	23,399	33,623	17,461	16,162	7,756	3,859	3,897	2,205	1,250	955
40-44	49,097	25,449	23,648	35,423	18,638	16,785	7,312	3,636	3,676	2,052	1,185	867
45-49	52,189	26,960	25,229	37,534	19,658	17,876	8,527	4,293	4,234	1,941	1,111	830
50-54	58,215	30,090	28,125	43,844	22,968	20,876	8,357	4,058	4,299	1,947	1,085	862
55-59	54,970	28,513	26,457	42,542	22,420	20,122	7,148	3,489	3,659	1,713	940	773
60-64	41,978	22,185	19,793	32,745	17,795	14,950	5,433	2,650	2,783	1,115	580	535
65-69	26,977	14,288	12,689	21,197	11,553	9,644	3,493	1,672	1,821	583	306	277
70-74	15,895	8,092	7,803	12,158	6,375	5,783	2,353	1,131	1,222	350	156	194
75-79	10,037	4,799	5,238	7,437	3,726	3,711	1,636	713	923	261	113	148
80-84	6,726	2,967	3,759	5,081	2,342	2,739	1,055	427	628	142	53	89
85+	5,559	1,978	3,581	4,371	1,570	2,801	744	264	480	116	43	73
Total	786,627	406,637	379,990	538,838	282,100	256,738	143,422	72,038	71,384	36,808	19,872	16,936

Age	Asian Alone or in Combination			Native Hawaiian or Pac. Is. Alone or in Combination			Hispanic or Latino Origin		
	Total	Male	Female	Total	Male	Female	Total	Male	Female
0-4	4,572	2,414	2,158	1,561	798	763	5,495	2,777	2,718
5-9	4,922	2,448	2,474	1,615	775	840	4,426	2,284	2,142
10-14	5,013	2,571	2,442	1,393	742	651	4,059	2,093	1,966
15-19	4,457	2,301	2,156	1,173	616	557	3,882	2,025	1,857
20-24	4,323	2,252	2,071	1,192	582	610	4,587	2,572	2,015
25-29	4,154	2,063	2,091	1,112	558	554	4,217	2,259	1,958
30-34	3,706	1,651	2,055	970	507	463	3,708	1,942	1,766
35-39	3,616	1,605	2,011	747	373	374	2,879	1,444	1,435
40-44	3,644	1,662	1,982	666	328	338	2,677	1,354	1,323
45-49	3,579	1,602	1,977	608	296	312	2,361	1,177	1,184
50-54	3,534	1,682	1,852	533	297	236	2,272	1,140	1,132
55-59	3,184	1,482	1,702	383	182	201	1,743	881	862
60-64	2,424	1,036	1,388	261	124	137	1,129	554	575
65-69	1,544	680	864	160	77	83	680	331	349
70-74	960	402	558	74	28	46	401	180	221
75-79	651	222	429	52	25	27	207	100	107
80-84	417	133	284	31	12	19	133	47	86
85+	311	94	217	17	7	10	78	22	56
Total	55,011	26,300	28,711	12,548	6,327	6,221	44,934	23,182	21,752

Notes: Modified race data. "Total Responses" are greater than total population because individuals may report more than one race group.

Sources: Alaska Department of Labor and Workforce Development, Research and Analysis Section; and U.S. Census Bureau

Table 1.22

Alaska Population by Age, Race (Alone), and Sex, July 1, 2013

Age	Total Population			White Alone			Alaska Native or American Indian Alone			Black or African American Alone		
	Total	Male	Female	Total	Male	Female	Total	Male	Female	Total	Male	Female
0-4	54,202	27,960	26,242	30,050	15,421	14,629	11,174	5,776	5,398	2,104	1,112	992
5-9	53,814	27,604	26,210	30,278	15,556	14,722	10,015	5,200	4,815	1,880	940	940
10-14	51,788	26,688	25,100	29,191	15,147	14,044	9,652	4,943	4,709	1,990	1,025	965
15-19	49,018	25,579	23,439	28,316	14,867	13,449	9,270	4,838	4,432	1,979	1,023	956
20-24	54,898	29,477	25,421	33,883	18,646	15,237	9,471	4,760	4,711	2,875	1,726	1,149
25-29	57,151	29,767	27,384	38,093	20,087	18,006	8,636	4,400	4,236	2,418	1,422	996
30-34	54,250	28,085	26,165	37,326	19,598	17,728	7,400	3,785	3,615	2,379	1,401	978
35-39	45,821	23,648	22,173	31,656	16,652	15,004	6,140	3,097	3,043	1,894	1,117	777
40-44	46,480	23,917	22,563	32,995	17,285	15,710	5,824	2,900	2,924	1,782	1,018	764
45-49	47,879	24,699	23,180	34,007	17,769	16,238	6,749	3,451	3,298	1,673	983	690
50-54	55,972	28,995	26,977	41,591	21,883	19,708	7,080	3,459	3,621	1,741	973	768
55-59	54,067	27,851	26,216	41,506	21,723	19,783	6,104	2,980	3,124	1,553	854	699
60-64	43,011	22,772	20,239	33,277	18,085	15,192	4,830	2,360	2,470	1,176	648	528
65-69	28,034	14,803	13,231	21,894	11,914	9,980	3,165	1,464	1,701	574	290	284
70-74	16,908	8,648	8,260	13,120	6,869	6,251	2,076	1,010	1,066	329	158	171
75-79	10,388	5,053	5,335	7,721	3,927	3,794	1,474	657	817	254	110	144
80-84	6,757	2,991	3,766	5,037	2,343	2,694	975	390	585	138	59	79
85+	5,639	2,047	3,592	4,457	1,644	2,813	629	229	400	107	42	65
Total	736,077	380,584	355,493	494,398	259,416	234,982	110,664	55,699	54,965	26,846	14,901	11,945

Age	Asian Alone			Native Hawaiian or Pacific Islander Alone			Two or More Races		
	Total	Male	Female	Total	Male	Female	Total	Male	Female
0-4	2,432	1,307	1,125	887	444	443	7,555	3,900	3,655
5-9	2,922	1,470	1,452	992	472	520	7,727	3,966	3,761
10-14	3,400	1,719	1,681	955	474	481	6,600	3,380	3,220
15-19	3,183	1,610	1,573	837	450	387	5,433	2,791	2,642
20-24	3,261	1,732	1,529	840	405	435	4,568	2,208	2,360
25-29	3,285	1,587	1,698	866	408	458	3,853	1,863	1,990
30-34	3,028	1,313	1,715	788	402	386	3,329	1,586	1,743
35-39	2,996	1,278	1,718	603	314	289	2,532	1,190	1,342
40-44	3,230	1,434	1,796	536	268	268	2,113	1,012	1,101
45-49	3,182	1,395	1,787	487	234	253	1,781	867	914
50-54	3,322	1,583	1,739	427	243	184	1,811	854	957
55-59	3,004	1,388	1,616	306	146	160	1,594	760	834
60-64	2,411	1,021	1,390	221	115	106	1,096	543	553
65-69	1,604	719	885	127	64	63	670	352	318
70-74	932	397	535	75	32	43	376	182	194
75-79	666	237	429	45	20	25	228	102	126
80-84	429	132	297	22	8	14	156	59	97
85+	320	90	230	14	6	8	112	36	76
Total	43,607	20,412	23,195	9,028	4,505	4,523	51,534	25,651	25,883

Note: Modified race data.

Sources: Alaska Department of Labor and Workforce Development, Research and Analysis Section; and U.S. Census Bureau

Table 1.23**Alaska Population by Age, Race (Alone or in Combination), Ethnicity, and Sex, July 1, 2013**

Age	Total Responses			White Alone or in Combination			Alaska Native or Amer. Indian Alone or in Comb.			Black or African American Alone or in Combination		
	Total	Male	Female	Total	Male	Female	Total	Male	Female	Total	Male	Female
0-4	62,794	32,423	30,371	36,778	18,905	17,873	15,839	8,196	7,643	4,148	2,167	1,981
5-9	62,499	32,059	30,440	37,099	19,068	18,031	14,649	7,590	7,059	3,963	2,015	1,948
10-14	59,153	30,468	28,685	35,070	18,147	16,923	13,568	6,972	6,596	3,731	1,874	1,857
15-19	55,014	28,650	26,364	33,246	17,395	15,851	12,734	6,635	6,099	3,269	1,659	1,610
20-24	59,829	31,858	27,971	37,898	20,574	17,324	12,503	6,194	6,309	3,843	2,210	1,633
25-29	61,300	31,753	29,547	41,575	21,747	19,828	11,243	5,647	5,596	3,073	1,728	1,345
30-34	57,832	29,792	28,040	40,331	21,014	19,317	9,628	4,839	4,789	2,921	1,671	1,250
35-39	48,539	24,923	23,616	33,943	17,723	16,220	7,867	3,894	3,973	2,240	1,293	947
40-44	48,746	24,996	23,750	34,891	18,177	16,714	7,362	3,649	3,713	2,015	1,139	876
45-49	49,791	25,627	24,164	35,596	18,535	17,061	8,126	4,130	3,996	1,868	1,079	789
50-54	57,885	29,893	27,992	43,179	22,625	20,554	8,504	4,119	4,385	1,919	1,053	866
55-59	55,748	28,656	27,092	42,918	22,390	20,528	7,397	3,592	3,805	1,697	932	765
60-64	44,171	23,345	20,826	34,246	18,575	15,671	5,751	2,817	2,934	1,277	691	586
65-69	28,750	15,186	13,564	22,489	12,230	10,259	3,746	1,771	1,975	639	331	308
70-74	17,299	8,836	8,463	13,433	7,026	6,407	2,417	1,178	1,239	357	167	190
75-79	10,631	5,157	5,474	7,926	4,024	3,902	1,667	743	924	268	116	152
80-84	6,921	3,051	3,870	5,186	2,400	2,786	1,110	442	668	149	62	87
85+	5,754	2,083	3,671	4,554	1,673	2,881	722	261	461	117	43	74
Total	792,656	408,756	383,900	540,358	282,228	258,130	144,833	72,669	72,164	37,494	20,230	17,264

Age	Asian Alone or in Combination			Native Hawaiian or Pac. Is. Alone or in Combination			Hispanic or Latino Origin		
	Total	Male	Female	Total	Male	Female	Total	Male	Female
0-4	4,476	2,372	2,104	1,553	783	770	5,730	2,934	2,796
5-9	5,101	2,568	2,533	1,687	818	869	4,673	2,401	2,272
10-14	5,300	2,713	2,587	1,484	762	722	4,193	2,198	1,995
15-19	4,551	2,313	2,238	1,214	648	566	3,962	2,063	1,899
20-24	4,419	2,319	2,100	1,166	561	605	4,736	2,692	2,044
25-29	4,251	2,066	2,185	1,158	565	593	4,504	2,420	2,084
30-34	3,919	1,734	2,185	1,033	534	499	3,979	2,108	1,871
35-39	3,687	1,610	2,077	802	403	399	3,110	1,608	1,502
40-44	3,788	1,695	2,093	690	336	354	2,722	1,365	1,357
45-49	3,570	1,577	1,993	631	306	325	2,372	1,142	1,230
50-54	3,715	1,777	1,938	568	319	249	2,309	1,165	1,144
55-59	3,318	1,548	1,770	418	194	224	1,808	915	893
60-64	2,613	1,123	1,490	284	139	145	1,263	623	640
65-69	1,715	774	941	161	80	81	732	349	383
70-74	1,004	431	573	88	34	54	412	188	224
75-79	709	250	459	61	24	37	238	111	127
80-84	446	135	311	30	12	18	142	53	89
85+	340	98	242	21	8	13	98	30	68
Total	56,922	27,103	29,819	13,049	6,526	6,523	46,983	24,365	22,618

Notes: Modified race data. "Total Responses" are greater than total population because individuals may report more than one race group.

Sources: Alaska Department of Labor and Workforce Development, Research and Analysis Section; and U.S. Census Bureau

Table 1.24

Alaska Population by Age, Race (Alone), and Sex, July 1, 2014

Age	Total Population			White Alone			Alaska Native or American Indian Alone			Black or African American Alone		
	Total	Male	Female	Total	Male	Female	Total	Male	Female	Total	Male	Female
0-4	53,394	27,230	26,164	29,865	15,186	14,679	11,126	5,675	5,451	2,057	1,078	979
5-9	53,942	27,996	25,946	30,144	15,647	14,497	10,260	5,370	4,890	1,777	896	881
10-14	51,178	26,283	24,895	28,661	14,856	13,805	9,630	4,901	4,729	1,914	999	915
15-19	48,447	25,317	23,130	27,771	14,547	13,224	9,254	4,853	4,401	1,919	982	937
20-24	54,438	29,541	24,897	33,339	18,486	14,853	9,328	4,756	4,572	2,864	1,763	1,101
25-29	57,677	30,178	27,499	38,005	20,087	17,918	8,891	4,530	4,361	2,465	1,468	997
30-34	55,878	28,929	26,949	38,343	20,181	18,162	7,766	3,957	3,809	2,378	1,369	1,009
35-39	46,571	24,078	22,493	32,140	16,928	15,212	6,313	3,231	3,082	1,896	1,111	785
40-44	45,129	23,329	21,800	31,808	16,683	15,125	5,802	2,937	2,865	1,723	1,008	715
45-49	46,286	23,919	22,367	32,825	17,220	15,605	6,382	3,216	3,166	1,635	972	663
50-54	54,509	28,348	26,161	40,002	21,121	18,881	7,108	3,535	3,573	1,755	975	780
55-59	53,581	27,522	26,059	40,850	21,324	19,526	6,208	3,016	3,192	1,545	849	696
60-64	44,241	23,285	20,956	34,141	18,401	15,740	4,954	2,429	2,525	1,243	685	558
65-69	29,635	15,646	13,989	23,045	12,524	10,521	3,348	1,566	1,782	618	324	294
70-74	18,013	9,197	8,816	14,046	7,375	6,671	2,173	1,028	1,145	334	162	172
75-79	10,751	5,260	5,491	8,023	4,078	3,945	1,507	699	808	255	105	150
80-84	6,878	3,076	3,802	5,090	2,417	2,673	1,015	388	627	146	62	84
85+	5,868	2,164	3,704	4,604	1,718	2,886	650	251	399	116	42	74
Total	736,416	381,298	355,118	492,702	258,779	233,923	111,715	56,338	55,377	26,640	14,850	11,790

Age	Asian Alone			Native Hawaiian or Pacific Islander Alone			Two or More Races		
	Total	Male	Female	Total	Male	Female	Total	Male	Female
0-4	2,397	1,257	1,140	776	397	379	7,173	3,637	3,536
5-9	2,862	1,506	1,356	1,001	485	516	7,898	4,092	3,806
10-14	3,378	1,678	1,700	954	463	491	6,641	3,386	3,255
15-19	3,177	1,635	1,542	833	457	376	5,493	2,843	2,650
20-24	3,370	1,776	1,594	869	432	437	4,668	2,328	2,340
25-29	3,438	1,718	1,720	877	413	464	4,001	1,962	2,039
30-34	3,121	1,375	1,746	829	423	406	3,441	1,624	1,817
35-39	2,952	1,236	1,716	640	324	316	2,630	1,248	1,382
40-44	3,202	1,436	1,766	524	262	262	2,070	1,003	1,067
45-49	3,120	1,374	1,746	511	251	260	1,813	886	927
50-54	3,382	1,595	1,787	471	262	209	1,791	860	931
55-59	3,037	1,410	1,627	309	150	159	1,632	773	859
60-64	2,523	1,089	1,434	230	118	112	1,150	563	587
65-69	1,747	780	967	138	68	70	739	384	355
70-74	980	405	575	83	41	42	397	186	211
75-79	695	250	445	44	18	26	227	110	117
80-84	446	141	305	26	9	17	155	59	96
85+	359	107	252	19	8	11	120	38	82
Total	44,186	20,768	23,418	9,134	4,581	4,553	52,039	25,982	26,057

Note: Modified race data.

Sources: Alaska Department of Labor and Workforce Development, Research and Analysis Section; and U.S. Census Bureau

Table 1.25

Alaska Population by Age, Race (Alone or in Combination), Ethnicity, and Sex, July 1, 2014

Age	Total Responses			White Alone or in Combination			Alaska Native or Amer. Indian Alone or in Comb.			Black or African American Alone or in Combination		
	Total	Male	Female	Total	Male	Female	Total	Male	Female	Total	Male	Female
0-4	61,575	31,397	30,178	36,264	18,439	17,825	15,571	7,945	7,626	3,989	2,052	1,937
5-9	62,814	32,586	30,228	37,116	19,261	17,855	14,942	7,811	7,131	3,924	2,016	1,908
10-14	58,593	30,072	28,521	34,574	17,860	16,714	13,495	6,899	6,596	3,684	1,860	1,824
15-19	54,515	28,444	26,071	32,747	17,113	15,634	12,697	6,651	6,046	3,243	1,642	1,601
20-24	59,497	32,064	27,433	37,453	20,524	16,929	12,402	6,252	6,150	3,890	2,292	1,598
25-29	61,976	32,263	29,713	41,610	21,830	19,780	11,574	5,835	5,739	3,163	1,795	1,368
30-34	59,577	30,676	28,901	41,441	21,628	19,813	10,050	5,031	5,019	2,941	1,649	1,292
35-39	49,394	25,424	23,970	34,508	18,049	16,459	8,101	4,067	4,034	2,261	1,303	958
40-44	47,353	24,400	22,953	33,654	17,566	16,088	7,284	3,664	3,620	1,964	1,137	827
45-49	48,229	24,863	23,366	34,440	18,001	16,439	7,762	3,901	3,861	1,839	1,073	766
50-54	56,397	29,248	27,149	41,564	21,868	19,696	8,502	4,190	4,312	1,933	1,054	879
55-59	55,301	28,338	26,963	42,294	22,004	20,290	7,527	3,638	3,889	1,690	927	763
60-64	45,456	23,877	21,579	35,159	18,907	16,252	5,912	2,903	3,009	1,349	728	621
65-69	30,422	16,058	14,364	23,703	12,869	10,834	3,984	1,896	2,088	686	365	321
70-74	18,428	9,391	9,037	14,378	7,537	6,841	2,531	1,197	1,334	367	170	197
75-79	10,997	5,374	5,623	8,223	4,181	4,042	1,706	795	911	271	112	159
80-84	7,040	3,136	3,904	5,239	2,473	2,766	1,150	440	710	156	66	90
85+	5,992	2,202	3,790	4,707	1,748	2,959	752	285	467	127	43	84
Total	793,556	409,813	383,743	539,074	281,858	257,216	145,942	73,400	72,542	37,477	20,284	17,193

Age	Asian Alone or in Combination			Native Hawaiian or Pac. Is. Alone or in Combination			Hispanic or Latino Origin		
	Total	Male	Female	Total	Male	Female	Total	Male	Female
0-4	4,340	2,248	2,092	1,411	713	698	5,915	2,945	2,970
5-9	5,112	2,644	2,468	1,720	854	866	4,781	2,456	2,325
10-14	5,340	2,700	2,640	1,500	753	747	4,190	2,241	1,949
15-19	4,608	2,377	2,231	1,220	661	559	3,981	2,021	1,960
20-24	4,556	2,401	2,155	1,196	595	601	5,024	2,891	2,133
25-29	4,448	2,224	2,224	1,181	579	602	4,732	2,556	2,176
30-34	4,064	1,812	2,252	1,081	556	525	4,224	2,265	1,959
35-39	3,672	1,587	2,085	852	418	434	3,322	1,703	1,619
40-44	3,772	1,701	2,071	679	332	347	2,719	1,365	1,354
45-49	3,531	1,565	1,966	657	323	334	2,396	1,172	1,224
50-54	3,783	1,795	1,988	615	341	274	2,319	1,138	1,181
55-59	3,362	1,571	1,791	428	198	230	1,851	933	918
60-64	2,740	1,196	1,544	296	143	153	1,320	652	668
65-69	1,872	841	1,031	177	87	90	804	380	424
70-74	1,055	443	612	97	44	53	422	198	224
75-79	736	264	472	61	22	39	255	116	139
80-84	462	145	317	33	12	21	159	58	101
85+	380	116	264	26	10	16	112	40	72
Total	57,833	27,630	30,203	13,230	6,641	6,589	48,526	25,130	23,396

Notes: Modified race data. "Total Responses" are greater than total population because individuals may report more than one race group.

Sources: Alaska Department of Labor and Workforce Development, Research and Analysis Section; and U.S. Census Bureau

Table 1.26

Alaska Population by Age, Race (Alone), and Sex, July 1, 2015

Age	Total Population			White Alone			Alaska Native or American Indian Alone			Black or African American Alone		
	Total	Male	Female	Total	Male	Female	Total	Male	Female	Total	Male	Female
0-4	53,023	27,066	25,957	29,589	15,035	14,554	11,280	5,767	5,513	2,053	1,076	977
5-9	54,121	28,027	26,094	30,103	15,568	14,535	10,382	5,395	4,987	1,811	899	912
10-14	50,851	26,083	24,768	28,396	14,694	13,702	9,629	4,924	4,705	1,827	948	879
15-19	48,041	25,190	22,851	26,970	14,226	12,744	9,441	4,966	4,475	1,858	953	905
20-24	52,876	28,811	24,065	32,258	17,944	14,314	8,866	4,535	4,331	2,889	1,773	1,116
25-29	58,180	30,514	27,666	37,718	19,955	17,763	9,260	4,711	4,549	2,531	1,516	1,015
30-34	56,926	29,543	27,383	38,910	20,576	18,334	8,018	4,113	3,905	2,333	1,340	993
35-39	47,806	24,729	23,077	32,886	17,339	15,547	6,538	3,335	3,203	1,985	1,165	820
40-44	43,944	22,726	21,218	30,584	16,088	14,496	5,809	2,970	2,839	1,697	991	706
45-49	45,264	23,333	21,931	32,074	16,800	15,274	6,073	3,065	3,008	1,615	949	666
50-54	52,552	27,369	25,183	38,163	20,185	17,978	7,063	3,534	3,529	1,687	940	747
55-59	53,079	27,378	25,701	40,208	21,085	19,123	6,307	3,044	3,263	1,504	853	651
60-64	45,548	23,784	21,764	35,034	18,715	16,319	5,126	2,501	2,625	1,303	714	589
65-69	31,459	16,600	14,859	24,390	13,243	11,147	3,566	1,711	1,855	665	356	309
70-74	19,082	9,743	9,339	14,882	7,830	7,052	2,284	1,059	1,225	375	181	194
75-79	11,154	5,487	5,667	8,431	4,282	4,149	1,495	689	806	242	104	138
80-84	7,007	3,145	3,862	5,189	2,466	2,723	1,011	398	613	159	66	93
85+	6,076	2,261	3,815	4,729	1,808	2,921	666	237	429	120	45	75
Total	736,989	381,789	355,200	490,514	257,839	232,675	112,814	56,954	55,860	26,654	14,869	11,785

Age	Asian Alone			Native Hawaiian or Pacific Islander Alone			Two or More Races		
	Total	Male	Female	Total	Male	Female	Total	Male	Female
0-4	2,456	1,281	1,175	739	384	355	6,906	3,523	3,383
5-9	2,853	1,537	1,316	1,027	515	512	7,945	4,113	3,832
10-14	3,340	1,648	1,692	976	464	512	6,683	3,405	3,278
15-19	3,226	1,638	1,588	873	478	395	5,673	2,929	2,744
20-24	3,390	1,800	1,590	850	427	423	4,623	2,332	2,291
25-29	3,662	1,848	1,814	907	445	462	4,102	2,039	2,063
30-34	3,281	1,431	1,850	886	427	459	3,498	1,656	1,842
35-39	3,013	1,249	1,764	681	346	335	2,703	1,295	1,408
40-44	3,154	1,384	1,770	555	270	285	2,145	1,023	1,122
45-49	3,189	1,413	1,776	535	258	277	1,778	848	930
50-54	3,386	1,576	1,810	459	246	213	1,794	888	906
55-59	3,100	1,451	1,649	331	177	154	1,629	768	861
60-64	2,636	1,153	1,483	239	115	124	1,210	586	624
65-69	1,876	800	1,076	165	82	83	797	408	389
70-74	1,035	431	604	94	48	46	412	194	218
75-79	711	276	435	45	20	25	230	116	114
80-84	455	145	310	32	10	22	161	60	101
85+	402	113	289	23	9	14	136	49	87
Total	45,165	21,174	23,991	9,417	4,721	4,696	52,425	26,232	26,193

Note: Modified race data.

Sources: Alaska Department of Labor and Workforce Development, Research and Analysis Section; and U.S. Census Bureau

Table 1.27**Alaska Population by Age, Race (Alone or in Combination), Ethnicity, and Sex, July 1, 2015**

Age	Total Responses			White Alone or in Combination			Alaska Native or Amer.Indian Alone or in Comb.			Black or African American Alone or in Combination		
	Total	Male	Female	Total	Male	Female	Total	Male	Female	Total	Male	Female
0-4	60,886	31,097	29,789	35,735	18,180	17,555	15,549	7,963	7,586	3,908	2,019	1,889
5-9	63,089	32,658	30,431	37,119	19,206	17,913	15,065	7,829	7,236	4,000	2,038	1,962
10-14	58,303	29,891	28,412	34,347	17,711	16,636	13,437	6,889	6,548	3,618	1,823	1,795
15-19	54,331	28,430	25,901	32,111	16,873	15,238	12,926	6,781	6,145	3,260	1,653	1,607
20-24	57,900	31,342	26,558	36,343	19,989	16,354	11,868	6,015	5,853	3,935	2,321	1,614
25-29	62,596	32,692	29,904	41,412	21,766	19,646	11,978	6,055	5,923	3,270	1,867	1,403
30-34	60,694	31,332	29,362	42,050	22,051	19,999	10,319	5,192	5,127	2,911	1,626	1,285
35-39	50,707	26,118	24,589	35,321	18,501	16,820	8,357	4,192	4,165	2,374	1,368	1,006
40-44	46,260	23,826	22,434	32,490	16,980	15,510	7,327	3,709	3,618	1,958	1,124	834
45-49	47,180	24,244	22,936	33,665	17,556	16,109	7,416	3,717	3,699	1,826	1,051	775
50-54	54,455	28,301	26,154	39,732	20,956	18,776	8,453	4,210	4,243	1,868	1,024	844
55-59	54,798	28,188	26,610	41,641	21,756	19,885	7,613	3,656	3,957	1,656	935	721
60-64	46,817	24,398	22,419	36,102	19,243	16,859	6,129	2,986	3,143	1,411	758	653
65-69	32,315	17,047	15,268	25,094	13,608	11,486	4,247	2,064	2,183	743	405	338
70-74	19,511	9,946	9,565	15,223	7,998	7,225	2,661	1,241	1,420	409	190	219
75-79	11,391	5,607	5,784	8,636	4,390	4,246	1,690	788	902	256	110	146
80-84	7,177	3,207	3,970	5,345	2,525	2,820	1,151	452	699	170	71	99
85+	6,219	2,312	3,907	4,846	1,848	2,998	783	282	501	132	47	85
Total	794,629	410,636	383,993	537,212	281,137	256,075	146,969	74,021	72,948	37,705	20,430	17,275

Age	Asian Alone or in Combination			Native Hawaiian or Pac. Is. Alone or in Combination			Hispanic or Latino Origin		
	Total	Male	Female	Total	Male	Female	Total	Male	Female
0-4	4,343	2,247	2,096	1,351	688	663	6,212	3,111	3,101
5-9	5,148	2,699	2,449	1,757	886	871	4,966	2,521	2,445
10-14	5,366	2,704	2,662	1,535	764	771	4,214	2,226	1,988
15-19	4,753	2,430	2,323	1,281	693	588	3,931	2,036	1,895
20-24	4,576	2,429	2,147	1,178	588	590	5,046	2,902	2,144
25-29	4,710	2,382	2,328	1,226	622	604	4,787	2,594	2,193
30-34	4,268	1,893	2,375	1,146	570	576	4,482	2,402	2,080
35-39	3,755	1,614	2,141	900	443	457	3,424	1,785	1,639
40-44	3,762	1,669	2,093	723	344	379	2,736	1,372	1,364
45-49	3,599	1,595	2,004	674	325	349	2,524	1,247	1,277
50-54	3,796	1,785	2,011	606	326	280	2,313	1,120	1,193
55-59	3,433	1,615	1,818	455	226	229	1,887	945	942
60-64	2,868	1,270	1,598	307	141	166	1,393	700	693
65-69	2,020	867	1,153	211	103	108	852	391	461
70-74	1,113	468	645	105	49	56	455	222	233
75-79	751	293	458	58	26	32	274	122	152
80-84	472	147	325	39	12	27	177	82	95
85+	428	124	304	30	11	19	128	40	88
Total	59,161	28,231	30,930	13,582	6,817	6,765	49,801	25,818	23,983

Notes: Modified race data. "Total Responses" are greater than total population because individuals may report more than one race group.

Sources: Alaska Department of Labor and Workforce Development, Research and Analysis Section; and U.S. Census Bureau

Table 1.28

Alaska Population by Age, Race (Alone), and Sex, July 1, 2016

Age	Total Population			White Alone			Alaska Native or American Indian Alone			Black or African American Alone		
	Total	Male	Female	Total	Male	Female	Total	Male	Female	Total	Male	Female
0-4	52,968	27,064	25,904	29,559	15,072	14,487	11,067	5,681	5,386	2,173	1,111	1,062
5-9	54,711	28,254	26,457	30,204	15,559	14,645	10,828	5,613	5,215	1,846	884	962
10-14	51,234	26,284	24,950	28,521	14,765	13,756	9,712	4,978	4,734	1,828	937	891
15-19	48,092	25,321	22,771	26,637	14,114	12,523	9,460	5,009	4,451	1,934	1,010	924
20-24	50,600	27,264	23,336	30,520	16,772	13,748	8,521	4,314	4,207	2,814	1,657	1,157
25-29	57,871	30,195	27,676	37,017	19,529	17,488	9,279	4,722	4,557	2,544	1,540	1,004
30-34	57,677	29,816	27,861	39,011	20,461	18,550	8,326	4,284	4,042	2,349	1,344	1,005
35-39	49,611	25,655	23,956	34,090	18,023	16,067	6,674	3,392	3,282	2,111	1,218	893
40-44	42,773	22,062	20,711	29,434	15,423	14,011	5,761	2,928	2,833	1,680	1,005	675
45-49	44,903	23,137	21,766	31,839	16,722	15,117	5,812	2,894	2,918	1,649	958	691
50-54	50,252	26,036	24,216	36,020	18,951	17,069	6,962	3,523	3,439	1,621	885	736
55-59	53,068	27,349	25,719	39,754	20,825	18,929	6,510	3,159	3,351	1,562	890	672
60-64	46,895	24,264	22,631	36,012	19,033	16,979	5,218	2,510	2,708	1,331	734	597
65-69	33,643	17,720	15,923	26,032	14,116	11,916	3,776	1,818	1,958	758	398	360
70-74	20,031	10,169	9,862	15,653	8,199	7,454	2,321	1,060	1,261	404	196	208
75-79	11,814	5,852	5,962	9,007	4,596	4,411	1,543	705	838	236	110	126
80-84	7,220	3,269	3,951	5,350	2,555	2,795	1,013	410	603	180	70	110
85+	6,286	2,365	3,921	4,904	1,919	2,985	670	220	450	125	48	77
Total	739,649	382,076	357,573	489,564	256,634	232,930	113,453	57,220	56,233	27,145	14,995	12,150

Age	Asian Alone			Native Hawaiian or Pacific Islander Alone			Two or More Races		
	Total	Male	Female	Total	Male	Female	Total	Male	Female
0-4	2,580	1,316	1,264	780	415	365	6,809	3,469	3,340
5-9	2,885	1,606	1,279	1,046	521	525	7,902	4,071	3,831
10-14	3,332	1,639	1,693	1,025	493	532	6,816	3,472	3,344
15-19	3,301	1,664	1,637	920	500	420	5,840	3,024	2,816
20-24	3,355	1,775	1,580	841	435	406	4,549	2,311	2,238
25-29	3,889	1,934	1,955	930	439	491	4,212	2,031	2,181
30-34	3,500	1,568	1,932	944	456	488	3,547	1,703	1,844
35-39	3,154	1,299	1,855	737	361	376	2,845	1,362	1,483
40-44	3,137	1,377	1,760	578	298	280	2,183	1,031	1,152
45-49	3,231	1,437	1,794	543	256	287	1,829	870	959
50-54	3,401	1,564	1,837	471	242	229	1,777	871	906
55-59	3,227	1,485	1,742	366	210	156	1,649	780	869
60-64	2,774	1,233	1,541	263	125	138	1,297	629	668
65-69	2,019	868	1,151	185	94	91	873	426	447
70-74	1,123	452	671	101	48	53	429	214	215
75-79	741	294	447	55	25	30	232	122	110
80-84	475	162	313	30	12	18	172	60	112
85+	418	112	306	26	10	16	143	56	87
Total	46,542	21,785	24,757	9,841	4,940	4,901	53,104	26,502	26,602

Note: Modified race data.

Sources: Alaska Department of Labor and Workforce Development, Research and Analysis Section; and U.S. Census Bureau

Table 1.29

Alaska Population by Age, Race (Alone or in Combination), Ethnicity, and Sex, July 1, 2016

Age	Total Responses			White Alone or in Combination			Alaska Native or Amer.Indian Alone or in Comb.			Black or African American Alone or in Combination		
	Total	Male	Female	Total	Male	Female	Total	Male	Female	Total	Male	Female
0-4	60,735	31,044	29,691	35,625	18,177	17,448	15,253	7,827	7,426	4,019	2,049	1,970
5-9	63,620	32,839	30,781	37,181	19,161	18,020	15,465	8,017	7,448	4,022	2,012	2,010
10-14	58,856	30,185	28,671	34,590	17,843	16,747	13,524	6,951	6,573	3,695	1,846	1,849
15-19	54,552	28,658	25,894	31,922	16,846	15,076	12,965	6,841	6,124	3,411	1,750	1,661
20-24	55,551	29,783	25,768	34,555	18,816	15,739	11,438	5,758	5,680	3,864	2,214	1,650
25-29	62,425	32,371	30,054	40,813	21,335	19,478	12,030	6,041	5,989	3,338	1,904	1,434
30-34	61,484	31,645	29,839	42,191	21,972	20,219	10,621	5,376	5,245	2,948	1,648	1,300
35-39	52,680	27,125	25,555	36,653	19,244	17,409	8,560	4,276	4,284	2,530	1,436	1,094
40-44	45,144	23,175	21,969	31,373	16,321	15,052	7,280	3,658	3,622	1,955	1,146	809
45-49	46,878	24,068	22,810	33,475	17,496	15,979	7,170	3,551	3,619	1,874	1,069	805
50-54	52,136	26,949	25,187	37,568	19,708	17,860	8,327	4,180	4,147	1,807	971	836
55-59	54,818	28,183	26,635	41,199	21,508	19,691	7,828	3,781	4,047	1,721	977	744
60-64	48,262	24,928	23,334	37,157	19,601	17,556	6,285	3,027	3,258	1,455	786	669
65-69	34,578	18,179	16,399	26,797	14,490	12,307	4,525	2,183	2,342	839	443	396
70-74	20,479	10,393	10,086	16,010	8,385	7,625	2,709	1,257	1,452	442	208	234
75-79	12,064	5,975	6,089	9,214	4,710	4,504	1,737	806	931	253	117	136
80-84	7,398	3,330	4,068	5,515	2,613	2,902	1,162	463	699	193	75	118
85+	6,435	2,422	4,013	5,025	1,965	3,060	789	269	520	138	50	88
Total	798,095	411,252	386,843	536,863	280,191	256,672	147,668	74,262	73,406	38,504	20,701	17,803

Age	Asian Alone or in Combination			Native Hawaiian or Pac. Is. Alone or in Combination			Hispanic or Latino Origin		
	Total	Male	Female	Total	Male	Female	Total	Male	Female
0-4	4,453	2,274	2,179	1,385	717	668	6,457	3,278	3,179
5-9	5,180	2,762	2,418	1,772	887	885	5,202	2,638	2,564
10-14	5,442	2,738	2,704	1,605	807	798	4,307	2,250	2,057
15-19	4,909	2,498	2,411	1,345	723	622	4,006	2,077	1,929
20-24	4,532	2,402	2,130	1,162	593	569	5,018	2,844	2,174
25-29	4,984	2,477	2,507	1,260	614	646	4,760	2,565	2,195
30-34	4,509	2,046	2,463	1,215	603	612	4,653	2,455	2,198
35-39	3,961	1,697	2,264	976	472	504	3,661	1,929	1,732
40-44	3,784	1,672	2,112	752	378	374	2,833	1,438	1,395
45-49	3,671	1,628	2,043	688	324	364	2,554	1,239	1,315
50-54	3,814	1,769	2,045	620	321	299	2,240	1,076	1,164
55-59	3,575	1,656	1,919	495	261	234	2,013	993	1,020
60-64	3,026	1,360	1,666	339	154	185	1,466	719	747
65-69	2,181	945	1,236	236	118	118	933	439	494
70-74	1,203	493	710	115	50	65	492	228	264
75-79	785	311	474	75	31	44	304	141	163
80-84	490	164	326	38	15	23	187	93	94
85+	448	126	322	35	12	23	129	40	89
Total	60,947	29,018	31,929	14,113	7,080	7,033	51,215	26,442	24,773

Notes: Modified race data. "Total Responses" are greater than total population because individuals may report more than one race group.

Sources: Alaska Department of Labor and Workforce Development, Research and Analysis Section; and U.S. Census Bureau

Table 1.30**Alaska Population by Age, Race (Alone), and Sex, July 1, 2017**

Age	Total Population			White Alone			Alaska Native or American Indian Alone			Black or African American Alone		
	Total	Male	Female	Total	Male	Female	Total	Male	Female	Total	Male	Female
0-4	52,489	26,686	25,803	29,231	14,862	14,369	10,843	5,511	5,332	2,202	1,117	1,085
5-9	54,189	27,884	26,305	29,431	15,076	14,355	11,102	5,786	5,316	1,931	918	1,013
10-14	52,105	26,722	25,383	28,793	14,883	13,910	9,931	5,124	4,807	1,802	909	893
15-19	47,769	25,113	22,656	26,278	13,984	12,294	9,350	4,882	4,468	1,963	1,033	930
20-24	48,757	26,327	22,430	28,977	15,999	12,978	8,264	4,201	4,063	2,675	1,527	1,148
25-29	57,360	29,664	27,696	36,053	18,848	17,205	9,352	4,715	4,637	2,633	1,591	1,042
30-34	57,493	29,677	27,816	38,406	20,063	18,343	8,448	4,330	4,118	2,341	1,373	968
35-39	50,939	26,290	24,649	34,722	18,376	16,346	6,935	3,550	3,385	2,192	1,229	963
40-44	42,641	21,828	20,813	29,213	15,198	14,015	5,771	2,902	2,869	1,689	997	692
45-49	44,102	22,756	21,346	31,202	16,401	14,801	5,543	2,784	2,759	1,642	954	688
50-54	47,697	24,628	23,069	33,826	17,795	16,031	6,722	3,394	3,328	1,589	882	707
55-59	52,183	26,835	25,348	38,700	20,239	18,461	6,490	3,126	3,364	1,585	888	697
60-64	47,265	24,181	23,084	36,045	18,820	17,225	5,295	2,530	2,765	1,355	749	606
65-69	34,386	17,982	16,404	26,495	14,287	12,208	3,939	1,888	2,051	812	419	393
70-74	21,877	11,216	10,661	17,210	9,091	8,119	2,423	1,097	1,326	433	217	216
75-79	12,580	6,184	6,396	9,704	4,923	4,781	1,566	705	861	242	110	132
80-84	7,550	3,434	4,116	5,589	2,676	2,913	1,036	418	618	194	78	116
85+	6,401	2,424	3,977	5,004	1,990	3,014	657	211	446	127	51	76
Total	737,783	379,831	357,952	484,879	253,511	231,368	113,667	57,154	56,513	27,407	15,042	12,365

Age	Asian Alone			Native Hawaiian or Pacific Islander Alone			Two or More Races		
	Total	Male	Female	Total	Male	Female	Total	Male	Female
0-4	2,756	1,342	1,414	803	440	363	6,654	3,414	3,240
5-9	2,867	1,594	1,273	1,033	515	518	7,825	3,995	3,830
10-14	3,353	1,644	1,709	1,111	525	586	7,115	3,637	3,478
15-19	3,335	1,660	1,675	975	514	461	5,868	3,040	2,828
20-24	3,450	1,827	1,623	840	436	404	4,551	2,337	2,214
25-29	4,096	1,968	2,128	951	457	494	4,275	2,085	2,190
30-34	3,619	1,677	1,942	1,034	503	531	3,645	1,731	1,914
35-39	3,299	1,331	1,968	828	383	445	2,963	1,421	1,542
40-44	3,168	1,385	1,783	574	306	268	2,226	1,040	1,186
45-49	3,278	1,466	1,812	557	262	295	1,880	889	991
50-54	3,391	1,503	1,888	468	230	238	1,701	824	877
55-59	3,320	1,544	1,776	436	261	175	1,652	777	875
60-64	2,926	1,297	1,629	272	132	140	1,372	653	719
65-69	2,063	871	1,192	198	96	102	879	421	458
70-74	1,216	510	706	106	52	54	489	249	240
75-79	755	292	463	60	26	34	253	128	125
80-84	534	182	352	34	16	18	163	64	99
85+	425	109	316	30	10	20	158	53	105
Total	47,851	22,202	25,649	10,310	5,164	5,146	53,669	26,758	26,911

Note: Modified race data.

Sources: Alaska Department of Labor and Workforce Development, Research and Analysis Section; and U.S. Census Bureau

Table 1.31

Alaska Population by Age, Race (Alone or in Combination), Ethnicity, and Sex, July 1, 2017

Age	Total Responses			White Alone or in Combination			Alaska Native or Amer.Indian Alone or in Comb.			Black or African American Alone or in Combination		
	Total	Male	Female	Total	Male	Female	Total	Male	Female	Total	Male	Female
0-4	60,079	30,596	29,483	35,156	17,908	17,248	14,912	7,607	7,305	4,008	2,043	1,965
5-9	63,038	32,393	30,645	36,337	18,609	17,728	15,681	8,138	7,543	4,090	2,027	2,063
10-14	60,070	30,806	29,264	35,121	18,105	17,016	13,838	7,157	6,681	3,774	1,872	1,902
15-19	54,273	28,479	25,794	31,587	16,727	14,860	12,805	6,695	6,110	3,470	1,788	1,682
20-24	53,713	28,873	24,840	33,022	18,067	14,955	11,124	5,632	5,492	3,771	2,112	1,659
25-29	61,981	31,896	30,085	39,895	20,694	19,201	12,125	6,065	6,060	3,460	1,973	1,487
30-34	61,408	31,539	29,869	41,667	21,600	20,067	10,779	5,424	5,355	2,977	1,691	1,286
35-39	54,146	27,835	26,311	37,393	19,649	17,744	8,880	4,466	4,414	2,647	1,467	1,180
40-44	45,047	22,948	22,099	31,193	16,109	15,084	7,290	3,622	3,668	1,978	1,147	831
45-49	46,127	23,711	22,416	32,880	17,187	15,693	6,903	3,441	3,462	1,878	1,073	805
50-54	49,495	25,496	23,999	35,302	18,505	16,797	8,010	4,012	3,998	1,773	965	808
55-59	53,924	27,657	26,267	40,143	20,916	19,227	7,792	3,737	4,055	1,741	971	770
60-64	48,708	24,867	23,841	37,256	19,410	17,846	6,413	3,058	3,355	1,488	803	685
65-69	35,330	18,437	16,893	27,267	14,663	12,604	4,690	2,250	2,440	900	466	434
70-74	22,391	11,478	10,913	17,616	9,308	8,308	2,868	1,328	1,540	474	230	244
75-79	12,858	6,316	6,542	9,936	5,046	4,890	1,777	811	966	261	118	143
80-84	7,722	3,499	4,223	5,744	2,737	3,007	1,178	474	704	206	84	122
85+	6,567	2,480	4,087	5,137	2,033	3,104	787	259	528	143	53	90
Total	796,877	409,306	387,571	532,652	277,273	255,379	147,852	74,176	73,676	39,039	20,883	18,156

Age	Asian Alone or in Combination			Native Hawaiian or Pac. Is. Alone or in Combination			Hispanic or Latino Origin		
	Total	Male	Female	Total	Male	Female	Total	Male	Female
0-4	4,599	2,291	2,308	1,404	747	657	6,450	3,243	3,207
5-9	5,165	2,737	2,428	1,765	882	883	5,538	2,836	2,702
10-14	5,604	2,813	2,791	1,733	859	874	4,434	2,297	2,137
15-19	4,999	2,523	2,476	1,412	746	666	4,041	2,117	1,924
20-24	4,642	2,466	2,176	1,154	596	558	4,891	2,740	2,151
25-29	5,217	2,530	2,687	1,284	634	650	4,929	2,651	2,278
30-34	4,673	2,172	2,501	1,312	652	660	4,762	2,523	2,239
35-39	4,150	1,755	2,395	1,076	498	578	3,857	2,039	1,818
40-44	3,839	1,689	2,150	747	381	366	2,923	1,478	1,445
45-49	3,751	1,672	2,079	715	338	377	2,639	1,309	1,330
50-54	3,796	1,704	2,092	614	310	304	2,261	1,091	1,170
55-59	3,678	1,718	1,960	570	315	255	2,033	990	1,043
60-64	3,196	1,430	1,766	355	166	189	1,537	753	784
65-69	2,228	945	1,283	245	113	132	963	457	506
70-74	1,309	557	752	124	55	69	549	258	291
75-79	804	309	495	80	32	48	330	149	181
80-84	552	185	367	42	19	23	200	104	96
85+	459	123	336	41	12	29	143	49	94
Total	62,661	29,619	33,042	14,673	7,355	7,318	52,480	27,084	25,396

Notes: Modified race data. "Total Responses" are greater than total population because individuals may report more than one race group.

Sources: Alaska Department of Labor and Workforce Development, Research and Analysis Section; and U.S. Census Bureau

Table 1.32

Alaska Population by Age, Race (Alone), and Sex, July 1, 2018

Age	Total Population			White Alone			Alaska Native or American Indian Alone			Black or African American Alone		
	Total	Male	Female	Total	Male	Female	Total	Male	Female	Total	Male	Female
0-4	51,007	25,871	25,136	28,454	14,450	14,004	10,371	5,269	5,102	2,101	1,051	1,050
5-9	53,445	27,498	25,947	29,056	14,926	14,130	11,176	5,778	5,398	1,970	940	1,030
10-14	52,462	26,965	25,497	28,742	14,815	13,927	10,098	5,228	4,870	1,836	917	919
15-19	47,425	24,991	22,434	25,938	13,807	12,131	9,332	4,909	4,423	1,886	1,026	860
20-24	47,271	25,541	21,730	27,820	15,411	12,409	8,110	4,139	3,971	2,674	1,491	1,183
25-29	56,196	29,261	26,935	34,964	18,358	16,606	9,254	4,698	4,556	2,640	1,577	1,063
30-34	56,687	28,978	27,709	37,415	19,314	18,101	8,613	4,383	4,230	2,290	1,389	901
35-39	52,502	27,160	25,342	35,712	18,940	16,772	7,215	3,681	3,534	2,243	1,261	982
40-44	42,849	22,045	20,804	29,327	15,423	13,904	5,835	2,904	2,931	1,672	1,000	672
45-49	43,347	22,219	21,128	30,494	15,969	14,525	5,484	2,740	2,744	1,621	935	686
50-54	45,066	23,246	21,820	31,757	16,640	15,117	6,299	3,227	3,072	1,529	854	675
55-59	51,215	26,378	24,837	37,603	19,727	17,876	6,513	3,142	3,371	1,610	886	724
60-64	47,539	24,216	23,323	36,058	18,716	17,342	5,463	2,631	2,832	1,346	743	603
65-69	35,987	18,772	17,215	27,632	14,839	12,793	4,126	1,982	2,144	912	498	414
70-74	23,138	11,784	11,354	18,118	9,519	8,599	2,560	1,120	1,440	460	228	232
75-79	13,448	6,671	6,777	10,519	5,368	5,151	1,564	713	851	258	123	135
80-84	7,912	3,632	4,280	5,923	2,841	3,082	1,044	431	613	194	76	118
85+	6,559	2,468	4,091	5,080	2,034	3,046	678	200	478	136	52	84
Total	734,055	377,696	356,359	480,612	251,097	229,515	113,735	57,175	56,560	27,378	15,047	12,331

Age	Asian Alone			Native Hawaiian or Pacific Islander Alone			Two or More Races		
	Total	Male	Female	Total	Male	Female	Total	Male	Female
0-4	2,676	1,307	1,369	799	428	371	6,606	3,366	3,240
5-9	2,781	1,521	1,260	983	508	475	7,479	3,825	3,654
10-14	3,256	1,660	1,596	1,104	531	573	7,426	3,814	3,612
15-19	3,333	1,637	1,696	984	512	472	5,952	3,100	2,852
20-24	3,289	1,747	1,542	856	442	414	4,522	2,311	2,211
25-29	4,105	2,022	2,083	920	446	474	4,313	2,160	2,153
30-34	3,661	1,666	1,995	1,015	490	525	3,693	1,736	1,957
35-39	3,367	1,413	1,954	893	403	490	3,072	1,462	1,610
40-44	3,100	1,329	1,771	566	294	272	2,349	1,095	1,254
45-49	3,265	1,421	1,844	545	264	281	1,938	890	1,048
50-54	3,339	1,484	1,855	515	252	263	1,627	789	838
55-59	3,392	1,573	1,819	454	269	185	1,643	781	862
60-64	2,937	1,302	1,635	309	147	162	1,426	677	749
65-69	2,178	912	1,266	204	104	100	935	437	498
70-74	1,330	578	752	113	50	63	557	289	268
75-79	757	296	461	68	30	38	282	141	141
80-84	550	196	354	40	19	21	161	69	92
85+	469	116	353	31	11	20	165	55	110
Total	47,785	22,180	25,605	10,399	5,200	5,199	54,146	26,997	27,149

Note: Modified race data.

Sources: Alaska Department of Labor and Workforce Development, Research and Analysis Section; and U.S. Census Bureau

Table 1.33**Alaska Population by Age, Race (Alone or in Combination), Ethnicity, and Sex, July 1, 2018**

Age	Total Responses			White Alone or in Combination			Alaska Native or Amer.Indian Alone or in Comb.			Black or African American Alone or in Combination		
	Total	Male	Female	Total	Male	Female	Total	Male	Female	Total	Male	Female
0-4	58,551	29,728	28,823	34,334	17,453	16,881	14,397	7,333	7,064	3,906	1,966	1,940
5-9	61,927	31,824	30,103	35,665	18,313	17,352	15,556	8,020	7,536	4,032	2,004	2,028
10-14	60,781	31,246	29,535	35,346	18,190	17,156	14,105	7,319	6,786	3,929	1,942	1,987
15-19	54,035	28,428	25,607	31,338	16,614	14,724	12,771	6,723	6,048	3,432	1,809	1,623
20-24	52,212	28,075	24,137	31,845	17,456	14,389	10,900	5,527	5,373	3,782	2,082	1,700
25-29	60,859	31,574	29,285	38,853	20,286	18,567	12,034	6,079	5,955	3,506	1,995	1,511
30-34	60,670	30,854	29,816	40,713	20,847	19,866	10,942	5,466	5,476	2,950	1,717	1,233
35-39	55,817	28,736	27,081	38,484	20,254	18,230	9,203	4,607	4,596	2,704	1,501	1,203
40-44	45,398	23,230	22,168	31,420	16,386	15,034	7,427	3,660	3,767	1,984	1,158	826
45-49	45,432	23,174	22,258	32,223	16,756	15,467	6,856	3,386	3,470	1,869	1,052	817
50-54	46,791	24,074	22,717	33,166	17,322	15,844	7,512	3,804	3,708	1,708	935	773
55-59	52,952	27,204	25,748	39,042	20,407	18,635	7,797	3,752	4,045	1,765	973	792
60-64	49,047	24,933	24,114	37,322	19,327	17,995	6,621	3,178	3,443	1,486	802	684
65-69	36,992	19,246	17,746	28,454	15,228	13,226	4,918	2,348	2,570	1,005	547	458
70-74	23,721	12,091	11,630	18,586	9,771	8,815	3,061	1,388	1,673	511	244	267
75-79	13,747	6,816	6,931	10,774	5,501	5,273	1,804	835	969	276	130	146
80-84	8,079	3,702	4,377	6,077	2,908	3,169	1,179	489	690	206	83	123
85+	6,732	2,524	4,208	5,219	2,079	3,140	814	248	566	154	55	99
Total	793,743	407,459	386,284	528,861	275,098	253,763	147,897	74,162	73,735	39,205	20,995	18,210

Age	Asian Alone or in Combination			Native Hawaiian or Pac. Is. Alone or in Combination			Hispanic or Latino Origin		
	Total	Male	Female	Total	Male	Female	Total	Male	Female
0-4	4,518	2,247	2,271	1,396	729	667	6,053	3,056	2,997
5-9	4,989	2,626	2,363	1,685	861	824	5,565	2,810	2,755
10-14	5,630	2,905	2,725	1,771	890	881	4,571	2,342	2,229
15-19	5,068	2,537	2,531	1,426	745	681	4,072	2,161	1,911
20-24	4,511	2,407	2,104	1,174	603	571	4,731	2,652	2,079
25-29	5,226	2,593	2,633	1,240	621	619	4,852	2,635	2,217
30-34	4,763	2,178	2,585	1,302	646	656	4,779	2,554	2,225
35-39	4,263	1,847	2,416	1,163	527	636	4,106	2,155	1,951
40-44	3,819	1,654	2,165	748	372	376	3,052	1,604	1,448
45-49	3,773	1,637	2,136	711	343	368	2,596	1,294	1,302
50-54	3,748	1,686	2,062	657	327	330	2,272	1,083	1,189
55-59	3,756	1,748	2,008	592	324	268	2,097	1,019	1,078
60-64	3,225	1,446	1,779	393	180	213	1,570	766	804
65-69	2,353	993	1,360	262	130	132	1,015	500	515
70-74	1,436	637	799	127	51	76	606	276	330
75-79	808	314	494	85	36	49	344	155	189
80-84	569	200	369	48	22	26	211	102	109
85+	504	129	375	41	13	28	163	65	98
Total	62,959	29,784	33,175	14,821	7,420	7,401	52,655	27,229	25,426

Notes: Modified race data. "Total Responses" are greater than total population because individuals may report more than one race group.

Sources: Alaska Department of Labor and Workforce Development, Research and Analysis Section; and U.S. Census Bureau

Table 1.34

Alaska Population by Age, Race (Alone), and Sex, July 1, 2019

Age	Total Population			White Alone			Alaska Native or American Indian Alone			Black or African American Alone		
	Total	Male	Female	Total	Male	Female	Total	Male	Female	Total	Male	Female
0-4	49,686	25,381	24,305	27,740	14,194	13,546	9,769	5,038	4,731	1,968	978	990
5-9	52,510	26,846	25,664	28,664	14,667	13,997	11,160	5,703	5,457	1,840	897	943
10-14	52,768	27,350	25,418	28,687	14,859	13,828	10,397	5,434	4,963	1,751	871	880
15-19	46,961	24,624	22,337	25,576	13,643	11,933	9,269	4,816	4,453	1,794	979	815
20-24	46,288	25,228	21,060	27,084	15,097	11,987	8,051	4,188	3,863	2,603	1,457	1,146
25-29	55,032	28,649	26,383	34,050	17,853	16,197	8,965	4,522	4,443	2,597	1,534	1,063
30-34	56,927	29,007	27,920	37,211	19,150	18,061	8,708	4,388	4,320	2,357	1,422	935
35-39	53,286	27,502	25,784	36,113	19,099	17,014	7,513	3,800	3,713	2,207	1,248	959
40-44	43,568	22,537	21,031	29,817	15,769	14,048	5,932	2,995	2,937	1,666	1,001	665
45-49	41,907	21,411	20,496	29,227	15,221	14,006	5,488	2,754	2,734	1,562	917	645
50-54	43,515	22,462	21,053	30,630	16,114	14,516	5,943	2,966	2,977	1,498	854	644
55-59	49,987	25,831	24,156	36,325	19,123	17,202	6,528	3,216	3,312	1,603	880	723
60-64	47,294	23,968	23,326	35,512	18,362	17,150	5,606	2,631	2,975	1,341	749	592
65-69	37,279	19,323	17,956	28,533	15,180	13,353	4,258	2,058	2,200	1,005	549	456
70-74	24,640	12,572	12,068	19,227	10,093	9,134	2,695	1,200	1,495	497	257	240
75-79	14,455	7,174	7,281	11,344	5,805	5,539	1,651	748	903	265	125	140
80-84	8,195	3,831	4,364	6,172	2,997	3,175	1,051	447	604	202	81	121
85+	6,709	2,561	4,148	5,129	2,078	3,051	730	226	504	139	52	87
Total	731,007	376,257	354,750	477,041	249,304	227,737	113,714	57,130	56,584	26,895	14,851	12,044

Age	Asian Alone			Native Hawaiian or Pacific Islander Alone			Two or More Races		
	Total	Male	Female	Total	Male	Female	Total	Male	Female
0-4	2,583	1,254	1,329	818	435	383	6,808	3,482	3,326
5-9	2,738	1,452	1,286	917	477	440	7,191	3,650	3,541
10-14	3,194	1,676	1,518	1,121	541	580	7,618	3,969	3,649
15-19	3,299	1,583	1,716	998	509	489	6,025	3,094	2,931
20-24	3,177	1,672	1,505	839	445	394	4,534	2,369	2,165
25-29	4,105	2,067	2,038	934	448	486	4,381	2,225	2,156
30-34	3,847	1,747	2,100	1,037	507	530	3,767	1,793	1,974
35-39	3,349	1,425	1,924	938	431	507	3,166	1,499	1,667
40-44	3,091	1,303	1,788	629	308	321	2,433	1,161	1,272
45-49	3,193	1,381	1,812	524	260	264	1,913	878	1,035
50-54	3,266	1,484	1,782	537	258	279	1,641	786	855
55-59	3,426	1,546	1,880	477	275	202	1,628	791	837
60-64	3,039	1,365	1,674	328	164	164	1,468	697	771
65-69	2,280	972	1,308	223	111	112	980	453	527
70-74	1,459	638	821	129	54	75	633	330	303
75-79	808	316	492	76	38	38	311	142	169
80-84	557	203	354	43	20	23	170	83	87
85+	505	137	368	35	11	24	171	57	114
Total	47,916	22,221	25,695	10,603	5,292	5,311	54,838	27,459	27,379

Note: Modified race data.

Sources: Alaska Department of Labor and Workforce Development, Research and Analysis Section; and U.S. Census Bureau

Table 1.35

Alaska Population by Age, Race (Alone or in Combination), Ethnicity, and Sex, July 1, 2019

Age	Total Responses			White Alone or in Combination			Alaska Native or Amer.Indian Alone or in Comb.			Black or African American Alone or in Combination		
	Total	Male	Female	Total	Male	Female	Total	Male	Female	Total	Male	Female
0-4	57,470	29,375	28,095	33,808	17,306	16,502	13,899	7,157	6,742	3,848	1,940	1,908
5-9	60,666	30,983	29,683	35,022	17,902	17,120	15,382	7,849	7,533	3,808	1,908	1,900
10-14	61,308	31,824	29,484	35,459	18,373	17,086	14,468	7,599	6,869	3,910	1,947	1,963
15-19	53,663	28,055	25,608	31,045	16,441	14,604	12,687	6,593	6,094	3,386	1,775	1,611
20-24	51,247	27,824	23,423	31,115	17,194	13,921	10,795	5,581	5,214	3,745	2,077	1,668
25-29	59,778	31,044	28,734	38,000	19,839	18,161	11,766	5,935	5,831	3,496	1,976	1,520
30-34	60,985	30,942	30,043	40,586	20,740	19,846	11,053	5,494	5,559	3,048	1,766	1,282
35-39	56,697	29,119	27,578	38,959	20,439	18,520	9,550	4,748	4,802	2,694	1,500	1,194
40-44	46,217	23,796	22,421	31,984	16,785	15,199	7,563	3,786	3,777	2,004	1,177	827
45-49	43,976	22,350	21,626	30,919	15,989	14,930	6,822	3,380	3,442	1,821	1,041	780
50-54	45,264	23,289	21,975	32,051	16,790	15,261	7,149	3,538	3,611	1,688	940	748
55-59	51,717	26,673	25,044	37,750	19,814	17,936	7,792	3,832	3,960	1,762	966	796
60-64	48,851	24,710	24,141	36,807	18,985	17,822	6,787	3,191	3,596	1,491	813	678
65-69	38,331	19,812	18,519	29,396	15,587	13,809	5,090	2,444	2,646	1,103	602	501
70-74	25,304	12,919	12,385	19,756	10,380	9,376	3,260	1,500	1,760	553	275	278
75-79	14,782	7,318	7,464	11,622	5,938	5,684	1,909	863	1,046	287	135	152
80-84	8,373	3,917	4,456	6,336	3,077	3,259	1,202	522	680	217	90	127
85+	6,886	2,619	4,267	5,273	2,124	3,149	868	276	592	156	55	101
Total	791,515	406,569	384,946	525,888	273,703	252,185	148,042	74,288	73,754	39,017	20,983	18,034

Age	Asian Alone or in Combination			Native Hawaiian or Pac. Is. Alone or in Combination			Hispanic or Latino Origin		
	Total	Male	Female	Total	Male	Female	Total	Male	Female
0-4	4,488	2,232	2,256	1,427	740	687	5,515	2,823	2,692
5-9	4,868	2,511	2,357	1,586	813	773	5,623	2,798	2,825
10-14	5,657	2,985	2,672	1,814	920	894	4,717	2,438	2,279
15-19	5,102	2,506	2,596	1,443	740	703	4,022	2,139	1,883
20-24	4,428	2,361	2,067	1,164	611	553	4,749	2,640	2,109
25-29	5,241	2,658	2,583	1,275	636	639	4,820	2,640	2,180
30-34	4,968	2,275	2,693	1,330	667	663	4,808	2,598	2,210
35-39	4,282	1,877	2,405	1,212	555	657	4,209	2,217	1,992
40-44	3,836	1,649	2,187	830	399	431	3,148	1,669	1,479
45-49	3,722	1,603	2,119	692	337	355	2,577	1,304	1,273
50-54	3,692	1,688	2,004	684	333	351	2,352	1,138	1,214
55-59	3,794	1,726	2,068	619	335	284	2,123	1,011	1,112
60-64	3,346	1,520	1,826	420	201	219	1,628	811	817
65-69	2,466	1,050	1,416	276	129	147	1,099	543	556
70-74	1,587	707	880	148	57	91	677	304	373
75-79	866	336	530	98	46	52	355	160	195
80-84	570	206	364	48	22	26	227	104	123
85+	542	151	391	47	13	34	193	82	111
Total	63,455	30,041	33,414	15,113	7,554	7,559	52,842	27,419	25,423

Notes: Modified race data. "Total Responses" are greater than total population because individuals may report more than one race group.

Sources: Alaska Department of Labor and Workforce Development, Research and Analysis Section; and U.S. Census Bureau